



# Arkansas State University

## **Enrollment Management Information: First-Time Freshmen ACT Scores Historical Profile Fall 2002 - Fall 2008**

The Office of Institutional Research, Planning, & Assessment  
email: [asuirp@astate.edu](mailto:asuirp@astate.edu)  
web: [irp.astate.edu](http://irp.astate.edu)

Disclaimer: It is important to note that the information in this profile may differ from data reported by the Office of Institutional Research , Planning, & Assessment to other federal, state, and regional agencies due to differences in reporting guidelines, reporting definitions, and the timing of when the information was prepared.

# Historical Fall ACT Composite Scores

Arkansas State University

## Number of Fall First-Time Freshmen by ACT Composite Scores

Jonesboro Campus

ACT Test Scores	Fall Semesters							2002-2008 Cumulative Total	Cumulative % of Total							2002-2008 % of Total
	2002	2003	2004	2005	2006	2007	2008		2002	2003	2004	2005	2006	2007	2008	
Above State Standards	36	0	0	0	0	0	0	0	0.0%	0.0%	0.0%	0.0%	0.0%	0.0%	0.0%	0.0%
	35	1	1	0	0	0	0	2	0.1%	0.1%	0.0%	0.0%	0.0%	0.0%	0.0%	0.0%
	34	0	0	0	0	1	0	1	0.1%	0.1%	0.0%	0.0%	0.1%	0.0%	0.0%	0.0%
	33	3	1	1	3	4	3	3	0.2%	0.1%	0.1%	0.2%	0.3%	0.2%	0.2%	0.2%
	32	4	4	2	5	6	5	4	0.5%	0.4%	0.2%	0.5%	0.6%	0.5%	0.4%	0.3%
	31	18	12	5	7	12	8	9	71	1.6%	1.2%	0.6%	0.9%	1.3%	0.9%	0.8%
	30	41	30	12	16	32	30	21	182	4.1%	3.1%	1.5%	2.0%	3.2%	2.7%	1.9%
	29	23	23	21	27	36	34	33	197	5.5%	4.7%	3.0%	3.7%	5.3%	4.6%	3.7%
	28	48	39	35	62	63	49	67	363	8.5%	7.2%	5.5%	7.6%	8.9%	7.4%	7.2%
	27	80	61	49	64	71	82	77	484	13.4%	11.2%	9.1%	11.6%	13.0%	12.2%	11.3%
	26	127	79	51	72	58	72	75	534	21.1%	16.4%	12.8%	16.2%	16.4%	16.3%	15.2%
	25	140	101	69	89	114	111	103	727	29.7%	23.0%	17.8%	21.8%	23.0%	22.7%	20.6%
	24	166	136	95	115	152	131	141	936	39.9%	31.9%	24.7%	29.0%	31.8%	30.3%	28.0%
	23	97	90	68	99	107	103	102	666	45.8%	37.8%	29.6%	35.3%	38.0%	36.2%	33.4%
22	89	108	87	112	120	128	119	763	51.3%	44.9%	35.9%	42.4%	44.9%	43.6%	39.6%	
21	107	104	106	147	114	129	157	864	57.8%	51.7%	43.6%	51.6%	51.5%	51.1%	47.9%	
20	107	123	117	128	157	137	164	933	64.4%	59.8%	52.1%	59.7%	60.6%	59.0%	56.5%	
19	112	105	109	130	118	136	154	864	71.3%	66.7%	60.0%	67.9%	67.5%	66.8%	64.6%	
Below State Standards	18	93	93	94	75	95	113	113	676	77.0%	72.8%	66.8%	72.7%	73.0%	73.3%	70.6%
	17	87	75	91	83	103	97	125	661	82.3%	77.7%	73.4%	77.9%	78.9%	78.9%	77.1%
	16	59	69	98	72	86	97	98	579	85.9%	82.2%	80.6%	82.4%	83.9%	84.5%	82.3%
	15	48	49	49	63	65	68	90	432	88.8%	85.4%	84.1%	86.4%	87.7%	88.5%	87.0%
	14	43	38	43	43	43	42	36	288	91.5%	87.9%	87.2%	89.1%	90.2%	90.9%	88.9%
	13	21	33	20	27	22	15	16	154	92.8%	90.1%	88.7%	90.8%	91.4%	91.7%	89.7%
	12	10	8	11	10	7	6	5	57	93.4%	90.6%	89.5%	91.5%	91.8%	92.1%	90.0%
	11	3	3	2	1	2	2	3	16	93.6%	90.8%	89.6%	91.5%	92.0%	92.2%	90.2%
	1-10	2	7	4	2	0	0	1	16	93.7%	91.3%	89.9%	91.7%	92.0%	92.2%	90.2%
	<b>Total ACT Scores</b>	<b>1,529</b>	<b>1,392</b>	<b>1,239</b>	<b>1,452</b>	<b>1,588</b>	<b>1,598</b>	<b>1,716</b>	<b>10,514</b>	<b>93.7%</b>	<b>91.3%</b>	<b>89.9%</b>	<b>91.7%</b>	<b>92.0%</b>	<b>92.2%</b>	<b>90.2%</b>
ASSET/Compass/SAT <sup>+</sup>	103	133	139	132	139	135	186	967	6.3%	8.7%	10.1%	8.3%	8.0%	7.8%	9.8%	8.4%
<b>Total First-Time Freshmen</b>	<b>1,632</b>	<b>1,525</b>	<b>1,378</b>	<b>1,584</b>	<b>1,727</b>	<b>1,733</b>	<b>1,902</b>	<b>11,481</b>	<b>Percentile Rank</b>							
<b>ASU ACT Composite Average</b>	<b>22.0</b>	<b>21.4</b>	<b>20.6</b>	<b>21.3</b>	<b>21.5</b>	<b>21.4</b>	<b>21.2</b>		75th	25	25	25	25	24	24	24
									50th	22	22	22	21	21	21	21
<b>Average High School GPA</b>	<b>3.20</b>	<b>3.18</b>	<b>3.11</b>	<b>3.19</b>	<b>3.23</b>	<b>3.17</b>	<b>3.13</b>		25th	19	19	19	18	18	18	18

\*Includes students without test scores.

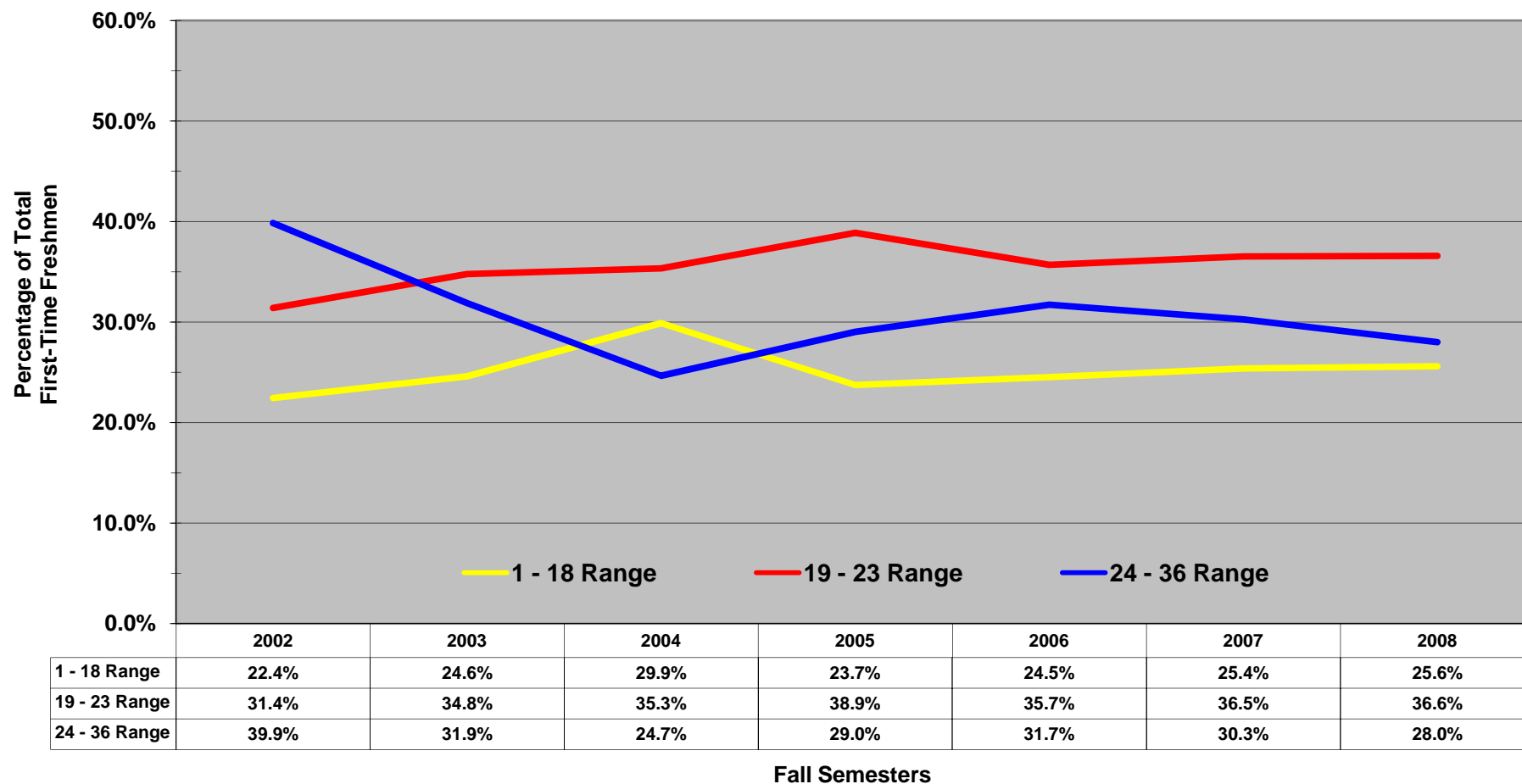
Disclaimer: It is important to note that the information in this profile may differ from data reported by the Office of Institutional Research, Planning, & Assessment to other federal, state, and regional agencies due to differences in reporting guidelines, reporting definitions, and the timing of when the information was prepared. Analysis prepared by the Office of Institutional Research, Planning, & Assessment

# Historical Fall ACT Composite Scores

Arkansas State University

## Proportion of Fall First-Time Freshmen by ACT Composite Score Ranges

Jonesboro Campus

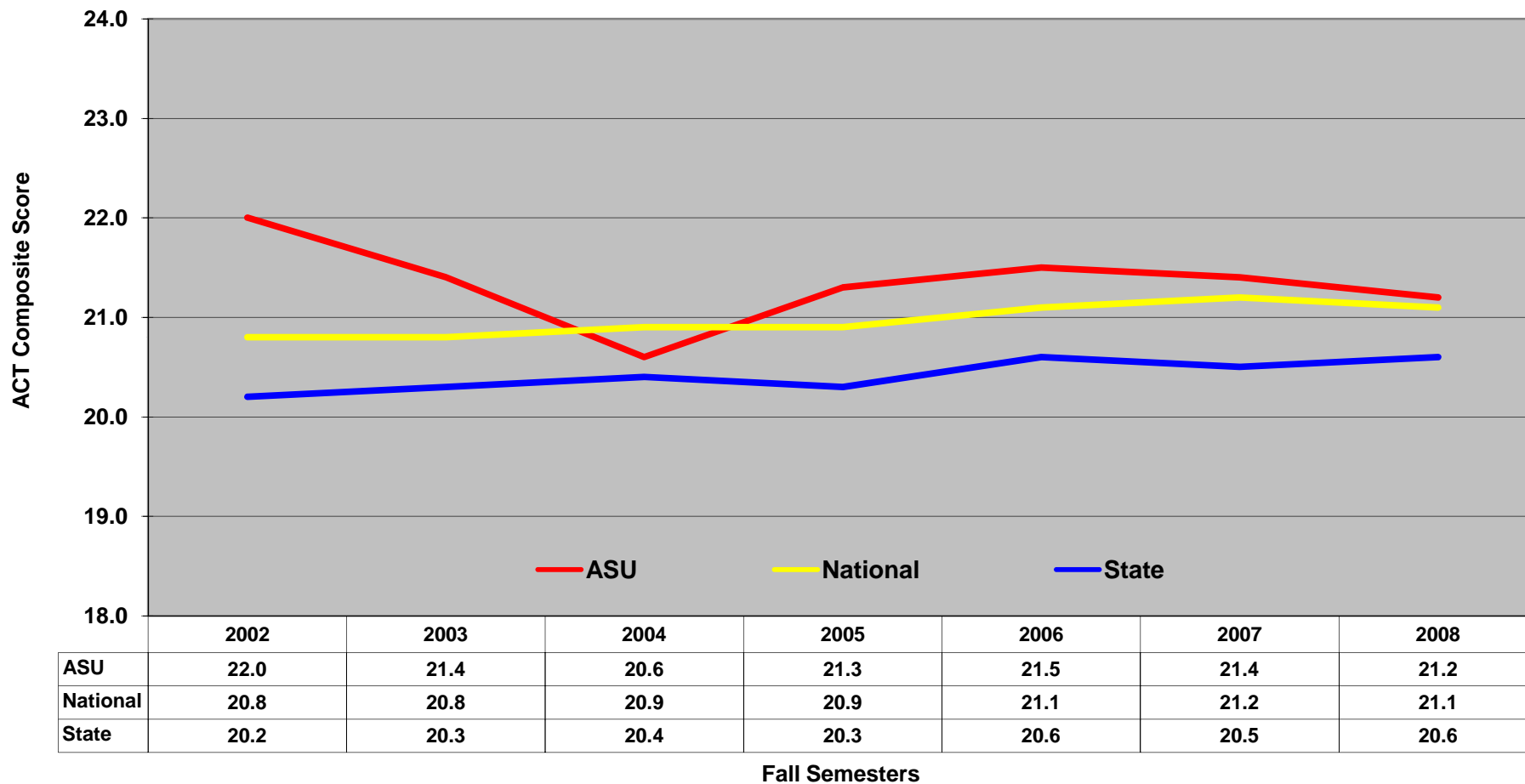


NOTE: Students who did not submit ACT scores are not represented.

Disclaimer: It is important to note that the information in this profile may differ from data reported by the Office of Institutional Research, Planning, & Assessment to other federal, state, and regional agencies due to differences in reporting guidelines, reporting definitions, and the timing of when the information was prepared. Analysis prepared by the Office of Institutional Research, Planning, & Assessment

# Historical Fall ACT Composite Averages

## Fall First-Time Freshmen by ACT Composite Averages



NOTE: Students who did not submit ACT scores are not represented.

Disclaimer: It is important to note that the information in this profile may differ from data reported by the Office of Institutional Research, Planning, & Assessment to other federal, state, and regional agencies due to differences in reporting guidelines, reporting definitions, and the timing of when the information was prepared. Analysis prepared by the Office of Institutional Research, Planning, & Assessment

# Historical Fall ACT Composite Scores - African American Females

Arkansas State University

## Number of Fall First-Time Freshmen by ACT Composite Scores

Jonesboro Campus

ACT Test Scores	Fall Semesters							2002-2008 Cumulative Total	Cumulative % of Total							2002-2008 % of Total	
	2002	2003	2004	2005	2006	2007	2008		2002	2003	2004	2005	2006	2007	2008		
Above State Standards	36	0	0	0	0	0	0	0	0.0%	0.0%	0.0%	0.0%	0.0%	0.0%	0.0%	0.0%	
	35	0	0	0	0	0	0	0	0.0%	0.0%	0.0%	0.0%	0.0%	0.0%	0.0%	0.0%	
	34	0	0	0	0	0	0	0	0.0%	0.0%	0.0%	0.0%	0.0%	0.0%	0.0%	0.0%	
	33	0	0	0	0	0	0	0	0.0%	0.0%	0.0%	0.0%	0.0%	0.0%	0.0%	0.0%	
	32	0	0	0	0	0	0	0	0.0%	0.0%	0.0%	0.0%	0.0%	0.0%	0.0%	0.0%	
	31	0	1	0	0	0	0	0	1	0.0%	0.7%	0.0%	0.0%	0.0%	0.0%	0.0%	0.1%
	30	0	0	0	0	1	1	0	2	0.0%	0.7%	0.0%	0.0%	0.5%	0.4%	0.0%	0.2%
	29	0	0	0	0	0	0	0	0	0.0%	0.7%	0.0%	0.0%	0.5%	0.4%	0.0%	0.0%
	28	0	0	2	1	0	0	0	3	0.0%	0.7%	1.1%	0.5%	0.5%	0.4%	0.0%	0.2%
	27	1	1	0	2	0	0	2	6	0.8%	1.5%	1.1%	1.4%	0.5%	0.4%	0.9%	0.5%
	26	0	0	0	0	2	2	1	5	0.8%	1.5%	1.1%	1.4%	1.5%	1.3%	1.3%	0.4%
	25	2	2	2	4	1	5	3	19	2.4%	2.9%	2.2%	3.3%	2.0%	3.5%	2.7%	1.5%
	24	0	2	5	2	2	4	11	26	2.4%	4.4%	5.0%	4.3%	3.0%	5.2%	7.5%	2.0%
	23	1	2	3	3	8	6	5	28	3.1%	5.9%	6.6%	5.7%	7.0%	7.9%	9.7%	2.1%
22	5	3	6	8	6	13	5	46	7.1%	8.1%	9.9%	9.5%	10.0%	13.5%	11.9%	3.5%	
21	7	6	3	16	12	12	25	81	12.6%	12.5%	11.6%	17.1%	15.9%	18.8%	23.0%	6.2%	
20	3	15	19	18	17	21	20	113	15.0%	23.5%	22.1%	25.7%	24.4%	27.9%	31.9%	8.6%	
19	14	15	11	15	20	24	26	125	26.0%	34.6%	28.2%	32.9%	34.3%	38.4%	43.4%	9.5%	
Below State Standards	18	14	8	23	16	15	18	24	118	37.0%	40.4%	40.9%	40.5%	41.8%	46.3%	54.0%	9.0%
	17	19	10	19	19	24	26	30	147	52.0%	47.8%	51.4%	49.5%	53.7%	57.6%	67.3%	11.2%
	16	14	12	26	22	25	32	26	157	63.0%	56.6%	65.7%	60.0%	66.2%	71.6%	78.8%	12.0%
	15	16	20	15	26	20	25	20	142	75.6%	71.3%	74.0%	72.4%	76.1%	82.5%	87.6%	10.8%
	14	11	12	16	19	13	16	12	99	84.3%	80.1%	82.9%	81.4%	82.6%	89.5%	92.9%	7.6%
	13	8	10	9	13	10	7	3	60	90.6%	87.5%	87.8%	87.6%	87.6%	92.6%	94.2%	4.6%
	12	1	3	0	6	3	2	2	17	91.3%	89.7%	87.8%	90.5%	89.1%	93.4%	95.1%	1.3%
	11	1	1	2	0	1	1	1	7	92.1%	90.4%	89.0%	90.5%	89.6%	93.9%	95.6%	0.5%
	1-10	1	1	0	0	0	0	0	2	92.9%	91.2%	89.0%	90.5%	89.6%	93.9%	95.6%	0.2%
	<b>Total ACT Scores</b>	<b>118</b>	<b>124</b>	<b>161</b>	<b>190</b>	<b>180</b>	<b>215</b>	<b>216</b>	<b>1,204</b>	<b>92.9%</b>	<b>91.2%</b>	<b>89.0%</b>	<b>90.5%</b>	<b>89.6%</b>	<b>93.9%</b>	<b>95.6%</b>	<b>91.9%</b>
ASSET/Compass/SAT <sup>+</sup>	9	12	20	20	21	14	10	106	7.1%	8.8%	11.0%	9.5%	10.4%	6.1%	4.4%	8.1%	
<b>Total First-Time Freshmen</b>	<b>127</b>	<b>136</b>	<b>181</b>	<b>210</b>	<b>201</b>	<b>229</b>	<b>226</b>	<b>1,310</b>	<b>Percentile Rank</b>								
<b>ASU ACT Composite Average</b>	<b>17.1</b>	<b>17.3</b>	<b>17.5</b>	<b>17.5</b>	<b>17.7</b>	<b>17.9</b>	<b>18.3</b>	<b>75th</b>	<b>19</b>	<b>19</b>	<b>20</b>	<b>19</b>	<b>20</b>	<b>20</b>	<b>20</b>		
								<b>50th</b>	<b>17</b>	<b>17</b>	<b>17</b>	<b>17</b>	<b>17</b>	<b>17</b>	<b>17</b>	<b>18</b>	
<b>Average High School GPA</b>	<b>2.88</b>	<b>2.91</b>	<b>2.90</b>	<b>2.91</b>	<b>2.96</b>	<b>2.94</b>	<b>2.90</b>	<b>25th</b>	<b>16</b>	<b>15</b>	<b>15</b>	<b>15</b>	<b>16</b>	<b>16</b>	<b>16</b>		

<sup>+</sup>Includes students without test scores.

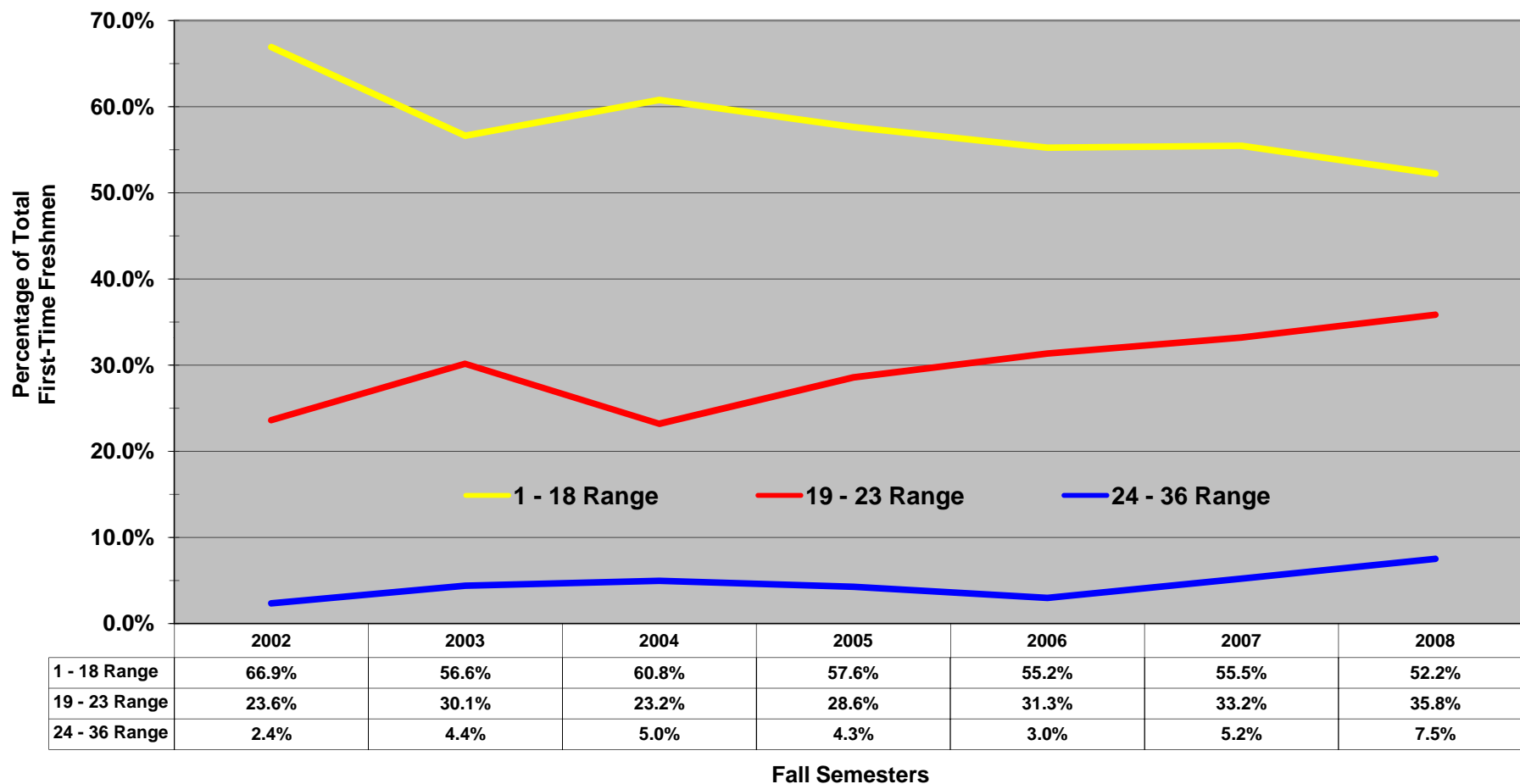
Disclaimer: It is important to note that the information in this profile may differ from data reported by the Office of Institutional Research, Planning, & Assessment to other federal, state, and regional agencies due to differences in reporting guidelines, reporting definitions, and the timing of when the information was prepared. Analysis prepared by the Office of Institutional Research, Planning, & Assessment.

# Historical Fall ACT Composite Scores - African American Females

Arkansas State University

## Proportion of Fall First-Time Freshmen by ACT Composite Score Ranges

Jonesboro Campus



NOTE: Students who did not submit ACT scores are not represented.

Disclaimer: It is important to note that the information in this profile may differ from data reported by the Office of Institutional Research, Planning, & Assessment to other federal, state, and regional agencies due to differences in reporting guidelines, reporting definitions, and the timing of when the information was prepared. Analysis prepared by the Office of Institutional Research, Planning, & Assessment

# Historical Fall ACT Composite Scores - African American Males

Arkansas State University

## Number of Fall First-Time Freshmen by ACT Composite Scores

Jonesboro Campus

ACT Test Scores	Fall Semesters							2002-2008 Cumulative Total	Cumulative % of Total							2002-2008 % of Total		
	2002	2003	2004	2005	2006	2007	2008		2002	2003	2004	2005	2006	2007	2008			
Above State Standards	36	0	0	0	0	0	0	0	0.0%	0.0%	0.0%	0.0%	0.0%	0.0%	0.0%	0.0%	0.0%	
	35	0	0	0	0	0	0	0	0.0%	0.0%	0.0%	0.0%	0.0%	0.0%	0.0%	0.0%	0.0%	
	34	0	0	0	0	0	0	0	0.0%	0.0%	0.0%	0.0%	0.0%	0.0%	0.0%	0.0%	0.0%	
	33	0	0	0	0	0	0	0	0.0%	0.0%	0.0%	0.0%	0.0%	0.0%	0.0%	0.0%	0.0%	
	32	0	0	0	0	0	0	0	0.0%	0.0%	0.0%	0.0%	0.0%	0.0%	0.0%	0.0%	0.0%	
	31	0	0	0	0	0	0	0	0.0%	0.0%	0.0%	0.0%	0.0%	0.0%	0.0%	0.0%	0.0%	
	30	0	1	0	0	0	0	0	1	0.0%	0.9%	0.0%	0.0%	0.0%	0.0%	0.0%	0.0%	0.1%
	29	0	0	0	0	0	0	0	0	0.0%	0.9%	0.0%	0.0%	0.0%	0.0%	0.0%	0.0%	0.0%
	28	1	0	1	1	0	0	0	3	0.8%	0.9%	0.7%	0.7%	0.0%	0.0%	0.0%	0.0%	0.3%
	27	0	0	0	1	2	0	2	5	0.8%	0.9%	0.7%	1.4%	1.2%	0.0%	1.1%	0.5%	0.5%
	26	0	0	0	0	1	1	0	2	0.8%	0.9%	0.7%	1.4%	1.7%	0.6%	1.1%	0.2%	0.2%
Below State Standards	25	0	2	2	3	3	2	2	14	0.8%	2.6%	2.0%	3.5%	3.5%	1.8%	2.1%	1.3%	
	24	4	0	2	2	3	4	4	19	4.1%	2.6%	3.4%	4.9%	5.2%	4.2%	4.3%	1.8%	
	23	3	5	1	4	3	8	4	28	6.6%	7.0%	4.1%	7.7%	7.0%	9.1%	6.4%	2.7%	
	22	1	3	3	7	9	3	6	32	7.4%	9.6%	6.1%	12.7%	12.2%	10.9%	9.6%	3.0%	
	21	5	6	6	8	7	6	13	51	11.6%	14.8%	10.1%	18.3%	16.3%	14.5%	16.5%	4.9%	
	20	6	10	10	16	17	12	17	88	16.5%	23.5%	16.9%	29.6%	26.2%	21.8%	25.5%	8.4%	
	19	9	5	12	12	15	12	22	87	24.0%	27.8%	25.0%	38.0%	34.9%	29.1%	37.2%	8.3%	
	18	16	11	9	11	24	12	16	99	37.2%	37.4%	31.1%	45.8%	48.8%	36.4%	45.7%	9.4%	
	17	10	11	24	15	21	20	30	131	45.5%	47.0%	47.3%	56.3%	61.0%	48.5%	61.7%	12.5%	
	16	17	13	22	18	16	27	18	131	59.5%	58.3%	62.2%	69.0%	70.3%	64.8%	71.3%	12.5%	
	15	14	9	16	15	20	21	31	126	71.1%	66.1%	73.0%	79.6%	82.0%	77.6%	87.8%	12.0%	
14	9	10	10	4	12	17	11	73	78.5%	74.8%	79.7%	82.4%	89.0%	87.9%	93.6%	6.9%		
13	8	12	8	7	5	2	3	45	85.1%	85.2%	85.1%	87.3%	91.9%	89.1%	95.2%	4.3%		
12	4	1	6	4	3	2	2	22	88.4%	86.1%	89.2%	90.1%	93.6%	90.3%	96.3%	2.1%		
11	2	1	0	0	0	1	0	4	90.1%	87.0%	89.2%	90.1%	93.6%	90.9%	96.3%	0.4%		
1-10	1	1	1	1	0	0	0	4	90.9%	87.8%	89.9%	90.8%	93.6%	90.9%	96.3%	0.4%		
<b>Total ACT Scores</b>	<b>110</b>	<b>101</b>	<b>133</b>	<b>129</b>	<b>161</b>	<b>150</b>	<b>181</b>	<b>965</b>	<b>90.9%</b>	<b>87.8%</b>	<b>89.9%</b>	<b>90.8%</b>	<b>93.6%</b>	<b>90.9%</b>	<b>96.3%</b>	<b>91.8%</b>		
ASSET/Compass/SAT <sup>†</sup>	11	14	15	13	11	15	7	86	9.1%	12.2%	10.1%	9.2%	6.4%	9.1%	3.7%	8.2%		
<b>Total First-Time Freshmen</b>	<b>121</b>	<b>115</b>	<b>148</b>	<b>142</b>	<b>172</b>	<b>165</b>	<b>188</b>	<b>1,051</b>	<b>Percentile Rank</b>									
<b>ASU ACT Composite Average</b>	<b>16.9</b>	<b>17.2</b>	<b>17.0</b>	<b>17.9</b>	<b>17.9</b>	<b>17.5</b>	<b>17.8</b>	<b>75th</b>	<b>20</b>	<b>20</b>	<b>19</b>	<b>20</b>	<b>20</b>	<b>19</b>	<b>20</b>			
								<b>50th</b>	<b>17</b>	<b>18</b>	<b>16</b>	<b>17</b>	<b>18</b>	<b>17</b>	<b>17</b>			
<b>Average High School GPA</b>	<b>2.61</b>	<b>2.61</b>	<b>2.67</b>	<b>2.78</b>	<b>2.70</b>	<b>2.65</b>	<b>2.59</b>	<b>25th</b>	<b>15</b>	<b>16</b>	<b>15</b>	<b>15</b>	<b>16</b>	<b>15</b>	<b>15</b>			

<sup>†</sup>Includes students without test scores.

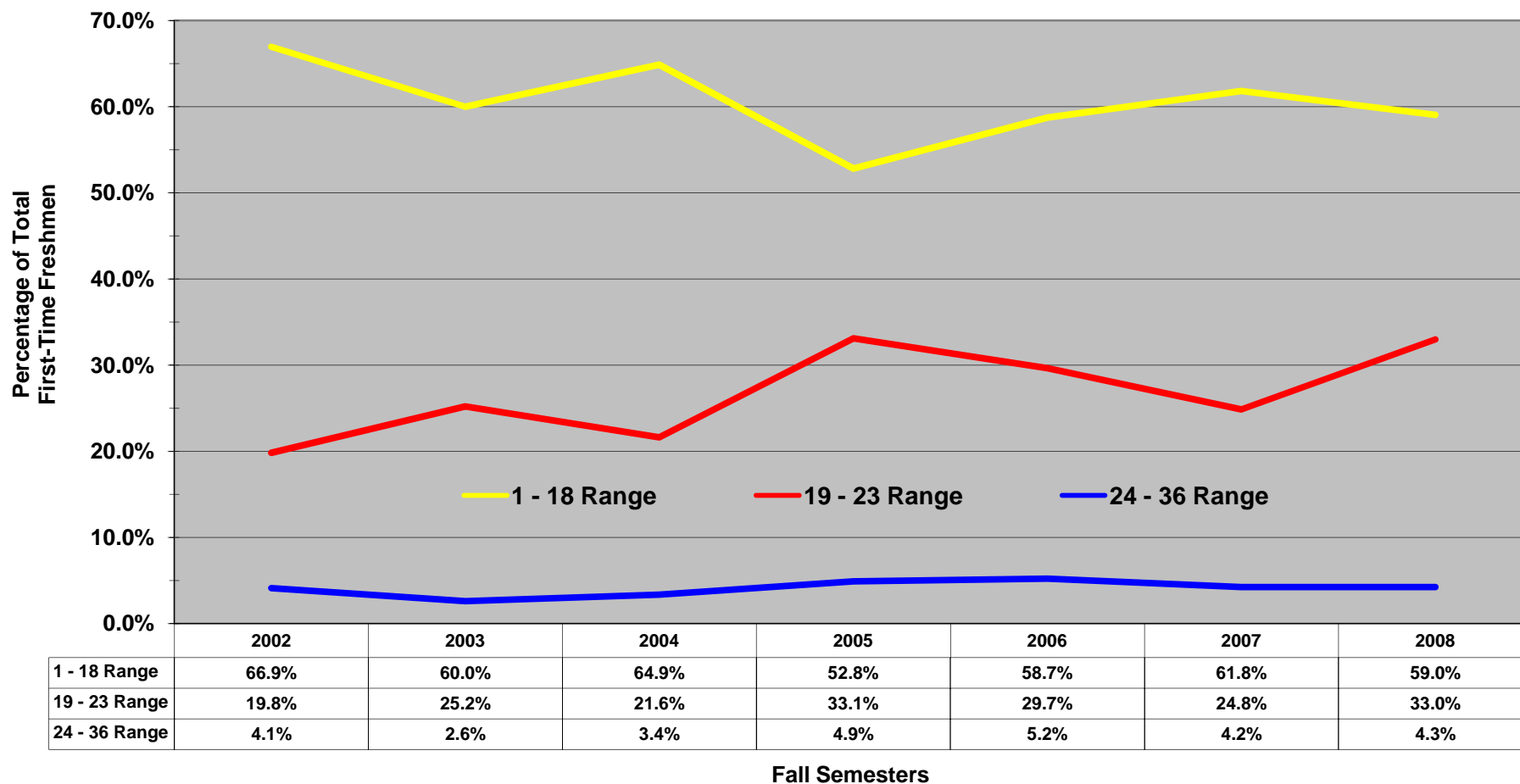
Disclaimer: It is important to note that the information in this profile may differ from data reported by the Office of Institutional Research, Planning, & Assessment to other federal, state, and regional agencies due to differences in reporting guidelines, reporting definitions, and the timing of when the information was prepared. Analysis prepared by the Office of Institutional Research, Planning, & Assessment.

# Historical Fall ACT Composite Scores - African American Males

Arkansas State University

## Proportion of Fall First-Time Freshmen by ACT Composite Score Ranges

Jonesboro Campus



NOTE: Students who did not submit ACT scores are not represented.

Disclaimer: It is important to note that the information in this profile may differ from data reported by the Office of Institutional Research, Planning, & Assessment to other federal, state, and regional agencies due to differences in reporting guidelines, reporting definitions, and the timing of when the information was prepared. Analysis prepared by the Office of Institutional Research, Planning, & Assessment

# Historical Fall ACT Composite Scores - White Females

Arkansas State University

## Number of Fall First-Time Freshmen by ACT Composite Scores

Jonesboro Campus

ACT Test Scores	Fall Semesters							2002-2008 Cumulative Total	Cumulative % of Total							2002-2008 % of Total		
	2002	2003	2004	2005	2006	2007	2008		2002	2003	2004	2005	2006	2007	2008			
36	0	0	0	0	0	0	0	0	0.0%	0.0%	0.0%	0.0%	0.0%	0.0%	0.0%	0.0%	0.0%	
35	0	1	0	0	0	0	0	1	0.0%	0.1%	0.0%	0.0%	0.0%	0.0%	0.0%	0.0%	0.1%	
34	0	0	0	0	0	0	0	0	0.0%	0.1%	0.0%	0.0%	0.0%	0.0%	0.0%	0.0%	0.0%	
33	0	1	1	0	2	2	2	2	0.0%	0.3%	0.2%	0.0%	0.3%	0.3%	0.3%	0.3%	0.3%	
32	1	1	1	2	4	2	2	4	0.1%	0.4%	0.4%	0.3%	0.8%	0.6%	0.6%	0.6%	0.5%	
31	4	4	0	2	4	7	3	7	0.7%	1.0%	0.4%	0.6%	1.4%	1.5%	1.1%	1.0%	1.0%	
30	23	16	8	9	14	16	12	23	4.0%	3.4%	1.8%	2.1%	3.3%	3.8%	3.0%	3.1%	3.1%	
29	12	11	10	15	17	10	14	17	5.7%	5.0%	3.5%	4.5%	5.6%	5.2%	5.3%	2.3%	2.3%	
28	25	17	20	25	42	23	34	42	9.2%	7.5%	7.0%	8.4%	11.3%	8.4%	10.7%	5.7%	5.7%	
27	37	29	25	24	39	40	33	40	14.5%	11.7%	11.4%	12.3%	16.6%	14.0%	15.9%	5.4%	5.4%	
26	60	47	34	40	26	42	39	60	23.0%	18.6%	17.3%	18.6%	20.2%	19.9%	22.2%	8.2%	8.2%	
25	61	59	38	51	57	60	52	61	31.6%	27.3%	24.0%	26.8%	27.9%	28.3%	30.5%	8.3%	8.3%	
24	88	76	46	64	86	78	66	88	44.1%	38.4%	32.0%	36.9%	39.6%	39.2%	41.0%	12.0%	12.0%	
23	53	44	31	51	63	45	44	63	51.6%	44.9%	37.5%	45.1%	48.2%	45.5%	48.0%	8.6%	8.6%	
22	41	50	39	55	67	60	57	67	57.4%	52.2%	44.3%	53.8%	57.4%	53.8%	57.1%	9.1%	9.1%	
21	54	47	61	60	48	64	57	64	65.1%	59.1%	55.0%	63.4%	63.9%	62.8%	66.2%	8.7%	8.7%	
20	55	48	46	50	61	57	59	61	72.9%	66.1%	63.0%	71.3%	72.2%	70.8%	75.6%	8.3%	8.3%	
19	45	47	40	47	45	46	43	47	79.3%	73.0%	70.1%	78.8%	78.3%	77.2%	82.5%	6.4%	6.4%	
Below State Standards	18	27	39	35	26	21	43	29	43	83.1%	78.7%	76.2%	83.0%	81.2%	83.2%	87.1%	5.9%	5.9%
	17	32	23	29	20	28	21	21	32	87.7%	82.1%	81.3%	86.1%	85.0%	86.2%	90.4%	4.4%	4.4%
	16	14	28	24	12	27	18	15	28	89.6%	86.2%	85.5%	88.1%	88.7%	88.7%	92.8%	3.8%	3.8%
	15	12	13	10	9	12	15	8	15	91.3%	88.1%	87.2%	89.5%	90.3%	90.8%	94.1%	2.0%	2.0%
	14	12	8	5	7	6	6	3	12	93.0%	89.3%	88.1%	90.6%	91.1%	91.6%	94.6%	1.6%	1.6%
	13	3	1	2	4	2	1	1	4	93.5%	89.4%	88.4%	91.2%	91.4%	91.7%	94.7%	0.5%	0.5%
	12	0	1	3	0	0	0	1	3	93.5%	89.6%	89.0%	91.2%	91.4%	91.7%	94.9%	0.4%	0.4%
	11	0	0	0	0	1	0	0	1	93.5%	89.6%	89.0%	91.2%	91.6%	91.7%	94.9%	0.1%	0.1%
1-10	0	3	3	1	0	0	0	3	93.5%	90.0%	89.5%	91.4%	91.6%	91.7%	94.9%	0.4%	0.4%	
<b>Total ACT Scores</b>	<b>659</b>	<b>614</b>	<b>511</b>	<b>574</b>	<b>672</b>	<b>656</b>	<b>595</b>	<b>672</b>	<b>93.5%</b>	<b>90.0%</b>	<b>89.5%</b>	<b>91.4%</b>	<b>91.6%</b>	<b>91.7%</b>	<b>94.9%</b>	<b>91.6%</b>	<b>91.6%</b>	
ASSET/Compass/SAT <sup>+</sup>	46	68	60	54	62	59	32	68	6.5%	10.0%	10.5%	8.6%	8.4%	8.3%	5.1%	9.3%	9.3%	
<b>Total First-Time Freshmen</b>	<b>705</b>	<b>682</b>	<b>571</b>	<b>628</b>	<b>734</b>	<b>715</b>	<b>627</b>	<b>734</b>	<b>Percentile Rank</b>									
<b>ASU ACT Composite Average</b>	<b>22.7</b>	<b>22.2</b>	<b>21.8</b>	<b>22.4</b>	<b>22.7</b>	<b>22.5</b>	<b>22.7</b>	<b>75th</b>	<b>25</b>	<b>25</b>	<b>25</b>	<b>25</b>	<b>24</b>	<b>25</b>	<b>25</b>	<b>25</b>	<b>25</b>	
								<b>50th</b>	<b>22</b>	<b>23</b>	<b>22</b>	<b>21</b>	<b>22</b>	<b>22</b>	<b>22</b>	<b>23</b>	<b>23</b>	
<b>Average High School GPA</b>	<b>3.39</b>	<b>3.37</b>	<b>3.29</b>	<b>3.39</b>	<b>3.44</b>	<b>3.39</b>	<b>3.43</b>	<b>25th</b>	<b>20</b>	<b>20</b>	<b>19</b>	<b>19</b>	<b>20</b>	<b>20</b>	<b>20</b>	<b>20</b>	<b>20</b>	

\*Includes students without test scores.

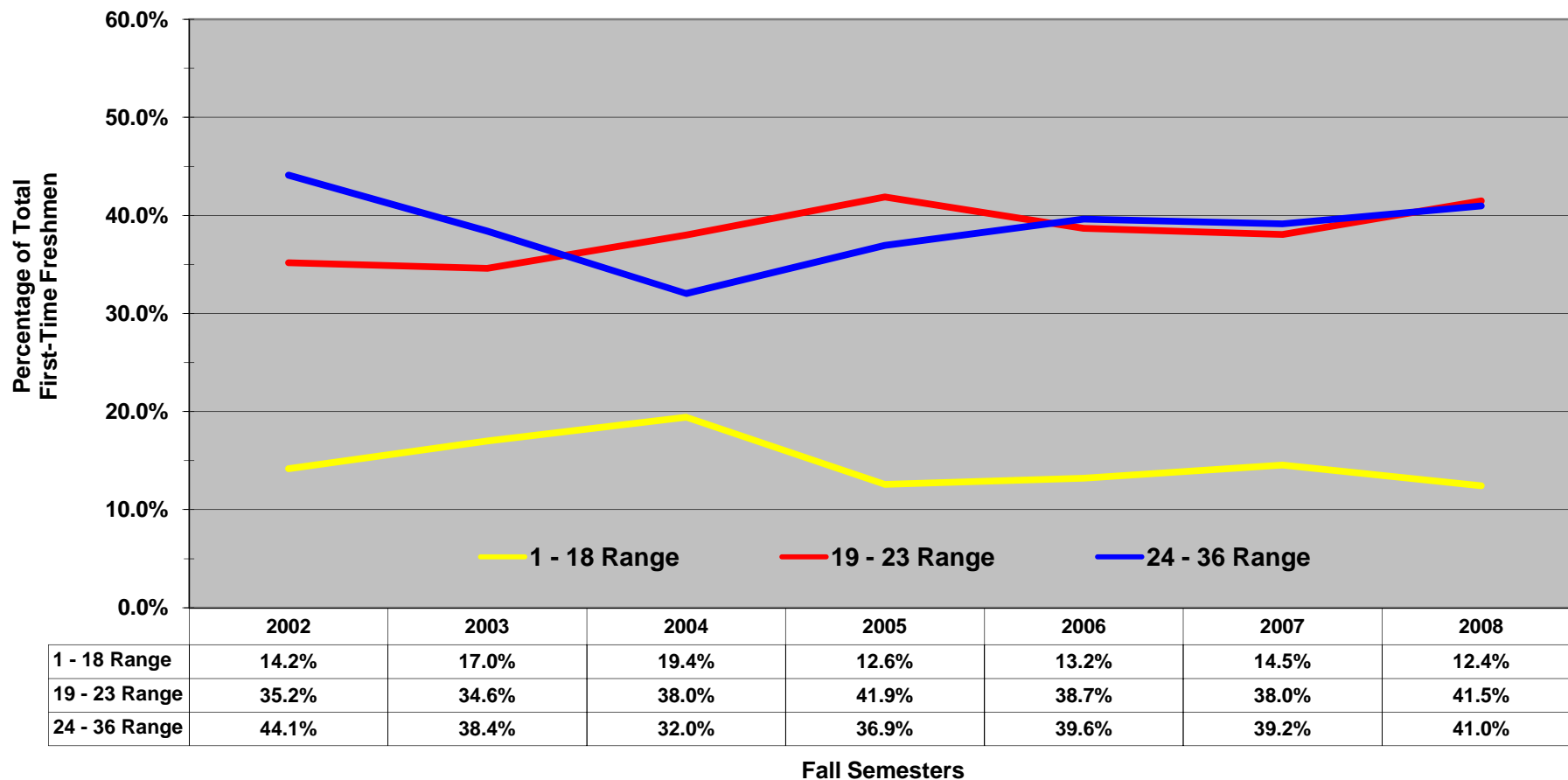
Disclaimer: It is important to note that the information in this profile may differ from data reported by the Office of Institutional Research, Planning, & Assessment to other federal, state, and regional agencies due to differences in reporting guidelines, reporting definitions, and the timing of when the information was prepared. Analysis prepared by the Office of Institutional Research, Planning, & Assessment

# Historical Fall ACT Composite Scores - White Females

Arkansas State University

## Proportion of Fall First-Time Freshmen by ACT Composite Score Ranges

Jonesboro Campus



NOTE: Students who did not submit ACT scores are not represented.

Disclaimer: It is important to note that the information in this profile may differ from data reported by the Office of Institutional Research, Planning, & Assessment to other federal, state, and regional agencies due to differences in reporting guidelines, reporting definitions, and the timing of when the information was prepared. Analysis prepared by the Office of Institutional Research, Planning, & Assessment

# Historical Fall ACT Composite Scores - White Males

Arkansas State University

## Number of Fall First-Time Freshmen by ACT Composite Scores

Jonesboro Campus

ACT Test Scores	Fall Semesters							2002-2008 Cumulative Total	Cumulative % of Total							2002-2008 % of Total
	2002	2003	2004	2005	2006	2007	2008		2002	2003	2004	2005	2006	2007	2008	
Above State Standards	36	0	0	0	0	0	0	0	0.0%	0.0%	0.0%	0.0%	0.0%	0.0%	0.0%	0.0%
	35	1	0	0	0	0	0	1	0.2%	0.0%	0.0%	0.0%	0.0%	0.0%	0.0%	0.0%
	34	0	0	0	0	1	0	1	0.2%	0.0%	0.0%	0.0%	0.2%	0.0%	0.0%	0.0%
	33	3	0	0	3	2	1	1	10	0.6%	0.0%	0.0%	0.6%	0.5%	0.2%	0.2%
	32	3	1	1	3	1	2	1	12	1.1%	0.2%	0.3%	1.2%	0.7%	0.6%	0.4%
	31	13	7	4	4	7	1	5	41	3.2%	1.6%	1.3%	2.0%	2.0%	0.7%	1.5%
	30	18	12	4	7	13	11	9	74	6.1%	3.9%	2.3%	3.3%	4.4%	2.8%	3.4%
	29	10	10	11	11	18	19	17	96	7.8%	5.9%	5.1%	5.5%	7.7%	6.3%	6.9%
	28	19	22	12	33	21	23	29	159	10.8%	10.2%	8.1%	11.9%	11.5%	10.5%	13.1%
	27	41	26	23	35	29	38	33	225	17.5%	15.3%	14.0%	18.8%	16.8%	17.5%	20.0%
	26	65	30	16	27	29	25	27	219	28.0%	21.1%	18.1%	24.1%	22.1%	22.1%	25.7%
	25	74	37	22	26	50	41	31	281	40.0%	28.4%	23.7%	29.2%	31.3%	29.7%	32.2%
	24	70	54	37	46	58	43	45	353	51.3%	38.9%	33.1%	38.2%	41.9%	37.6%	41.7%
	23	39	34	25	36	30	36	33	233	57.6%	45.6%	39.4%	45.2%	47.3%	44.2%	48.6%
22	38	43	34	39	32	50	34	270	63.8%	54.0%	48.1%	52.8%	53.2%	53.4%	55.8%	
21	39	38	31	57	42	42	42	291	70.1%	61.4%	56.0%	64.0%	60.9%	61.1%	64.6%	
20	39	46	35	38	52	41	36	287	76.4%	70.5%	64.9%	71.4%	70.4%	68.7%	72.2%	
19	42	34	37	42	35	50	34	274	83.2%	77.1%	74.3%	79.6%	76.8%	77.9%	79.4%	
Below State Standards	18	33	28	24	16	26	35	21	183	88.5%	82.6%	80.4%	82.8%	81.5%	84.3%	83.8%
	17	21	26	15	21	27	24	21	155	91.9%	87.7%	84.2%	86.9%	86.5%	88.8%	88.2%
	16	13	13	25	15	15	19	14	114	94.0%	90.2%	90.6%	89.8%	89.2%	92.3%	91.2%
	15	4	6	5	11	12	5	11	54	94.7%	91.4%	91.9%	92.0%	91.4%	93.2%	93.5%
	14	6	6	7	8	10	3	4	44	95.6%	92.6%	93.6%	93.5%	93.2%	93.7%	94.3%
	13	1	4	0	2	4	2	1	14	95.8%	93.3%	93.6%	93.9%	94.0%	94.1%	94.5%
	12	3	1	1	0	1	1	0	7	96.3%	93.5%	93.9%	93.9%	94.1%	94.3%	94.5%
	11	0	1	0	1	0	0	0	2	96.3%	93.7%	93.9%	94.1%	94.1%	94.3%	94.5%
	1-10	0	2	0	0	0	0	0	2	96.3%	94.1%	93.9%	94.1%	94.1%	94.3%	94.5%
	<b>Total ACT Scores</b>	<b>595</b>	<b>481</b>	<b>369</b>	<b>481</b>	<b>515</b>	<b>512</b>	<b>449</b>	<b>3,402</b>	<b>96.3%</b>	<b>94.1%</b>	<b>93.9%</b>	<b>94.1%</b>	<b>94.1%</b>	<b>94.3%</b>	<b>94.5%</b>
ASSET/Compass/SAT <sup>+</sup>	23	30	24	30	32	31	26	196	3.7%	5.9%	6.1%	5.9%	5.9%	5.7%	5.5%	5.4%
<b>Total First-Time Freshmen</b>	<b>618</b>	<b>511</b>	<b>393</b>	<b>511</b>	<b>547</b>	<b>543</b>	<b>475</b>	<b>3,598</b>	<b>Percentile Rank</b>							
<b>ASU ACT Composite Average</b>	<b>23.2</b>	<b>22.3</b>	<b>21.8</b>	<b>22.5</b>	<b>22.4</b>	<b>22.4</b>	<b>22.7</b>	75th	<b>26</b>	<b>26</b>	<b>25</b>	<b>24</b>	<b>25</b>	<b>25</b>	<b>26</b>	
								50th	<b>23</b>	<b>24</b>	<b>22</b>	<b>22</b>	<b>23</b>	<b>22</b>	<b>23</b>	
<b>Average High School GPA</b>	<b>3.18</b>	<b>3.14</b>	<b>3.14</b>	<b>3.20</b>	<b>3.23</b>	<b>3.15</b>	<b>3.19</b>	25th	<b>19</b>	<b>20</b>	<b>19</b>	<b>19</b>	<b>20</b>	<b>19</b>	<b>20</b>	

<sup>+</sup>Includes students without test scores.

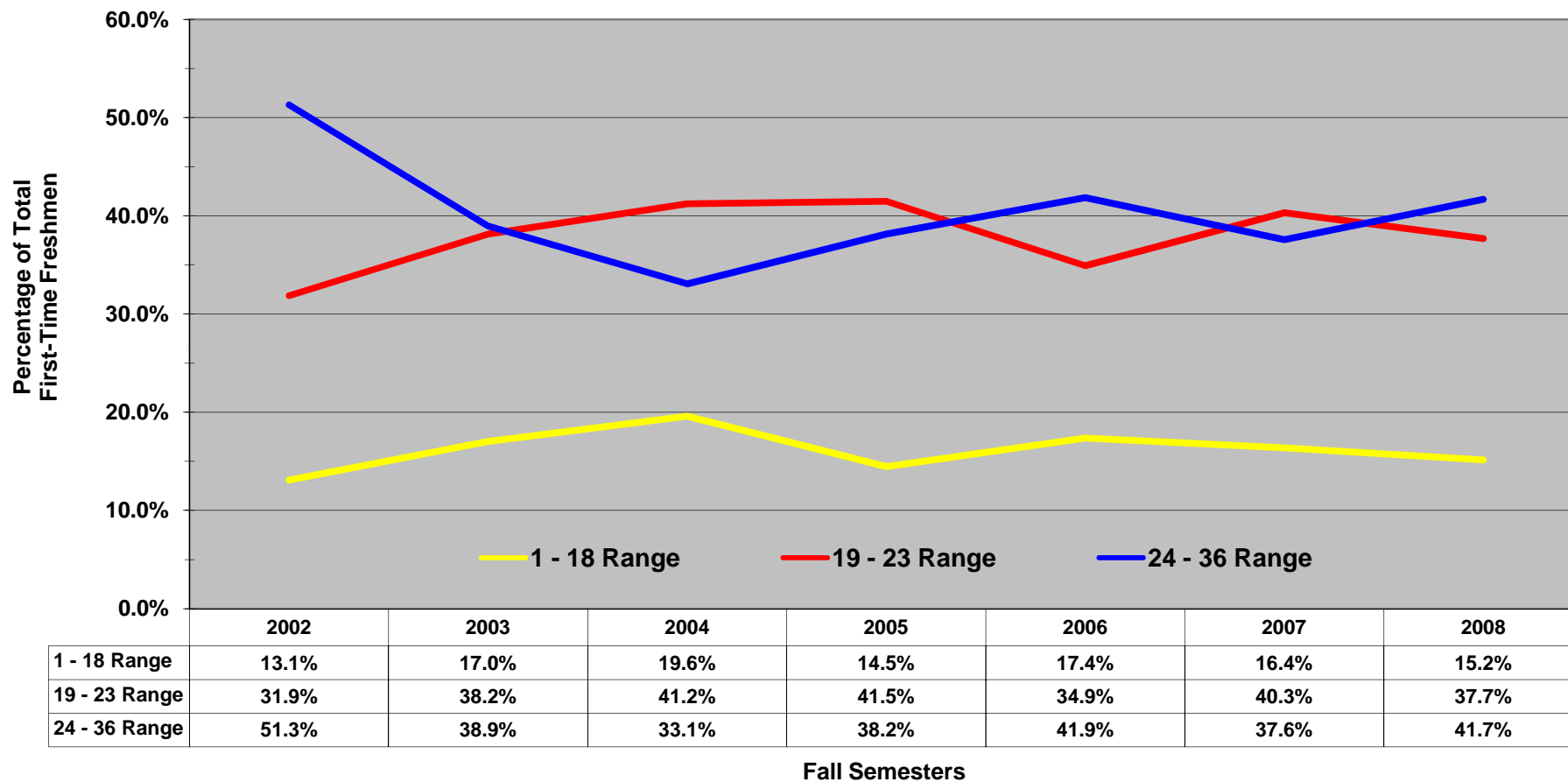
Disclaimer: It is important to note that the information in this profile may differ from data reported by the Office of Institutional Research, Planning, & Assessment to other federal, state, and regional agencies due to differences in reporting guidelines, reporting definitions, and the timing of when the information was prepared. Analysis prepared by the Office of Institutional Research, Planning, & Assessment

# Historical Fall ACT Composite Scores - White Males

Arkansas State University

## Proportion of Fall First-Time Freshmen by ACT Composite Score Ranges

Jonesboro Campus



NOTE: Students who did not submit ACT scores are not represented.

Disclaimer: It is important to note that the information in this profile may differ from data reported by the Office of Institutional Research, Planning, & Assessment to other federal, state, and regional agencies due to differences in reporting guidelines, reporting definitions, and the timing of when the information was prepared. Analysis prepared by the Office of Institutional Research, Planning, & Assessment

# Historical Fall ACT Composite Scores - Other Females\*

Arkansas State University

## Number of Fall First-Time Freshmen by ACT Composite Scores

Jonesboro Campus

ACT Test Scores	Fall Semesters							2002-2008 Cumulative Total	% of Total							2002-2008 % of Total	
	2002	2003	2004	2005	2006	2007	2008		2002	2003	2004	2005	2006	2007	2008		
Above State Standards	36	0	0	0	0	0	0	0	0.0%	0.0%	0.0%	0.0%	0.0%	0.0%	0.0%	0.0%	
	35	0	0	0	0	0	0	0	0.0%	0.0%	0.0%	0.0%	0.0%	0.0%	0.0%	0.0%	
	34	0	0	0	0	0	0	0	0.0%	0.0%	0.0%	0.0%	0.0%	0.0%	0.0%	0.0%	
	33	0	0	0	0	0	0	0	0.0%	0.0%	0.0%	0.0%	0.0%	0.0%	0.0%	0.0%	
	32	0	0	0	0	1	1	0	2	0.0%	0.0%	0.0%	0.0%	2.2%	2.1%	0.0%	0.4%
	31	1	0	1	1	1	0	0	4	3.1%	0.0%	2.3%	2.2%	4.4%	2.1%	0.0%	0.9%
	30	0	1	0	0	2	1	0	4	3.1%	2.3%	2.3%	2.2%	8.9%	4.2%	0.0%	0.9%
	29	1	2	0	0	0	3	1	7	6.3%	6.8%	2.3%	2.2%	8.9%	10.4%	0.5%	1.5%
	28	2	0	0	2	0	3	3	10	12.5%	6.8%	2.3%	6.5%	8.9%	16.7%	2.0%	2.2%
	27	0	2	1	1	1	3	4	12	12.5%	11.4%	4.5%	8.7%	11.1%	22.9%	4.0%	2.6%
	26	1	1	0	4	0	2	5	13	15.6%	13.6%	4.5%	17.4%	11.1%	27.1%	6.6%	2.8%
	25	0	0	2	2	2	1	8	15	15.6%	13.6%	9.1%	21.7%	15.6%	29.2%	10.6%	3.3%
	24	3	1	1	1	3	2	10	21	25.0%	15.9%	11.4%	23.9%	22.2%	33.3%	15.7%	4.6%
	23	0	4	3	3	3	3	14	30	25.0%	25.0%	18.2%	30.4%	28.9%	39.6%	22.7%	6.6%
22	1	6	1	1	4	1	13	27	28.1%	38.6%	20.5%	32.6%	37.8%	41.7%	29.3%	5.9%	
21	0	5	1	3	2	4	9	24	28.1%	50.0%	22.7%	39.1%	42.2%	50.0%	33.8%	5.3%	
20	2	3	5	2	5	3	15	35	34.4%	56.8%	34.1%	43.5%	53.3%	56.3%	41.4%	7.7%	
19	2	3	3	5	1	4	14	32	40.6%	63.6%	40.9%	54.3%	55.6%	64.6%	48.5%	7.0%	
Below State Standards	18	2	3	2	5	6	2	10	30	46.9%	70.5%	45.5%	65.2%	68.9%	68.8%	53.5%	6.6%
	17	4	3	2	3	1	4	9	26	59.4%	77.3%	50.0%	71.7%	71.1%	77.1%	58.1%	5.7%
	16	0	0	1	1	3	1	12	18	59.4%	77.3%	52.3%	73.9%	77.8%	79.2%	64.1%	3.9%
	15	1	0	2	1	0	0	7	11	62.5%	77.3%	56.8%	76.1%	77.8%	79.2%	67.7%	2.4%
	14	2	1	4	2	1	0	2	12	68.8%	79.5%	65.9%	80.4%	80.0%	79.2%	68.7%	2.6%
	13	1	3	0	1	0	2	3	10	71.9%	86.4%	65.9%	82.6%	80.0%	83.3%	70.2%	2.2%
	12	1	1	1	0	0	1	0	4	75.0%	88.6%	68.2%	82.6%	80.0%	85.4%	70.2%	0.9%
	11	0	0	0	0	0	0	1	1	75.0%	88.6%	68.2%	82.6%	80.0%	85.4%	70.7%	0.2%
	1-10	0	0	0	0	0	0	0	0	75.0%	88.6%	68.2%	82.6%	80.0%	85.4%	70.7%	0.0%
	<b>Total ACT Scores</b>	<b>24</b>	<b>39</b>	<b>30</b>	<b>38</b>	<b>36</b>	<b>41</b>	<b>140</b>	<b>348</b>	<b>75.0%</b>	<b>88.6%</b>	<b>68.2%</b>	<b>82.6%</b>	<b>80.0%</b>	<b>85.4%</b>	<b>70.7%</b>	<b>76.1%</b>
ASSET/Compass/SAT <sup>†</sup>	8	5	14	8	9	7	58	109	25.0%	11.4%	31.8%	17.4%	20.0%	14.6%	29.3%	23.9%	
<b>Total First-Time Freshmen</b>	<b>32</b>	<b>44</b>	<b>44</b>	<b>46</b>	<b>45</b>	<b>48</b>	<b>198</b>	<b>457</b>	<b>Percentile Rank</b>								
<b>ASU ACT Composite Average</b>	<b>20.3</b>	<b>20.7</b>	<b>19.5</b>	<b>20.9</b>	<b>21.6</b>	<b>22.1</b>	<b>20.4</b>	<b>75th</b>	<b>23</b>	<b>24</b>	<b>23</b>	<b>23</b>	<b>23</b>	<b>27</b>	<b>23</b>		
								<b>50th</b>	<b>21</b>	<b>19</b>	<b>21</b>	<b>19</b>	<b>21</b>	<b>21</b>	<b>20</b>		
<b>Average High School GPA</b>	<b>3.15</b>	<b>3.18</b>	<b>3.04</b>	<b>3.29</b>	<b>3.23</b>	<b>3.34</b>	<b>3.08</b>	<b>25th</b>	<b>18</b>	<b>17</b>	<b>18</b>	<b>15</b>	<b>18</b>	<b>19</b>	<b>18</b>		

\*NOTE: Other Females represents all other races besides African Americans and White Americans.

<sup>†</sup>Includes students without test scores.

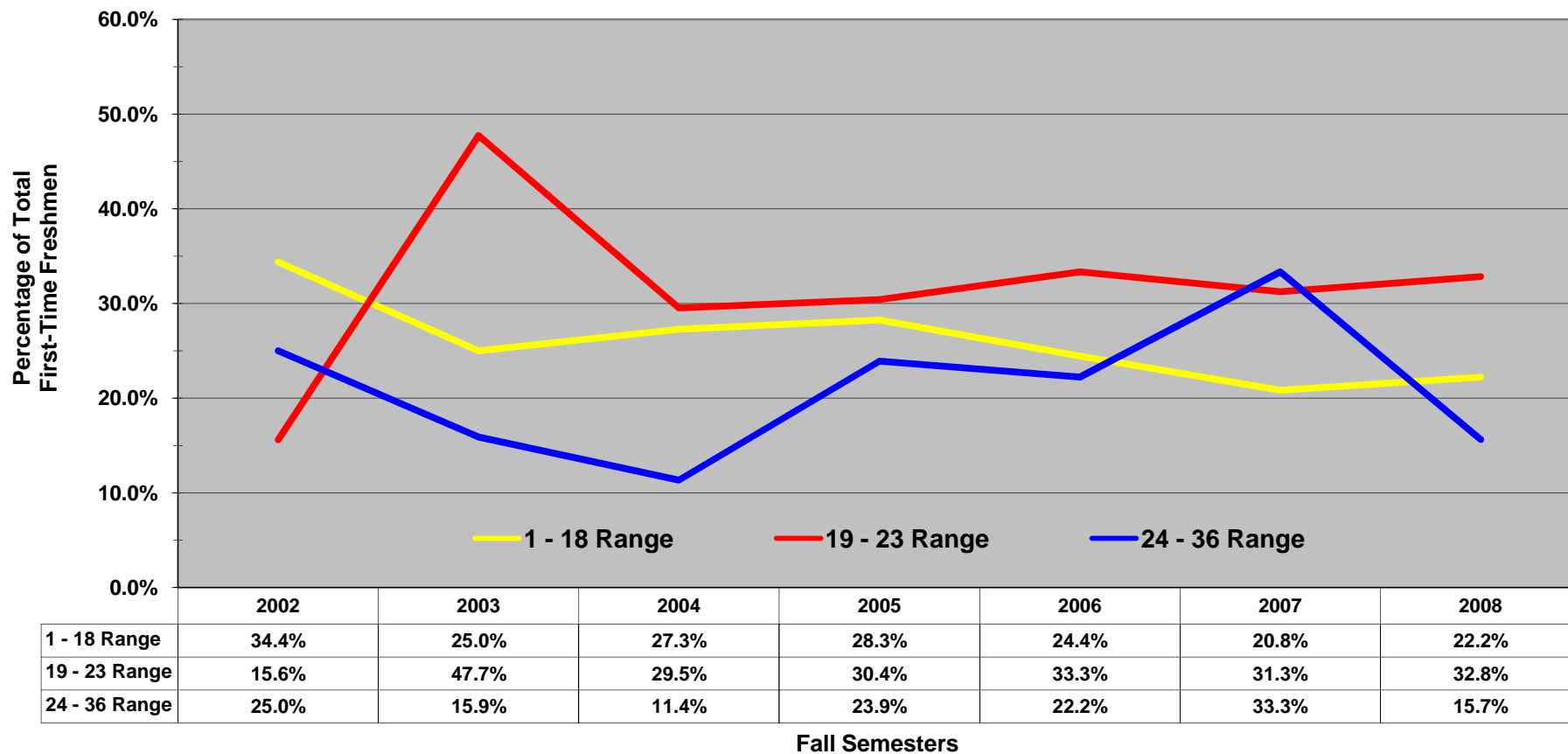
Disclaimer: It is important to note that the information in this profile may differ from data reported by the Office of Institutional Research, Planning, & Assessment to other federal, state, and regional agencies due to differences in reporting guidelines, reporting definitions, and the timing of when the information was prepared. Analysis prepared by the Office of Institutional Research, Planning, & Assessment

# Historical Fall ACT Composite Scores - Other Females\*

Arkansas State University

## Proportion of Fall First-Time Freshmen by ACT Composite Score Ranges

Jonesboro Campus



\*NOTE: Other Females represents all other races besides African Americans and White Americans.

Disclaimer: It is important to note that the information in this profile may differ from data reported by the Office of Institutional Research, Planning, & Assessment to other federal, state, and regional agencies due to differences in reporting guidelines, reporting definitions, and the timing of when the information was prepared. Analysis prepared by the Office of Institutional Research, Planning, & Assessment

# Historical Fall ACT Composite Scores - Other Males\*

Arkansas State University

## Number of Fall First-Time Freshmen by ACT Composite Scores

Jonesboro Campus

ACT Test Scores	Fall Semesters							2002-2008 Cumulative Total	Cumulative % of Total							2002-2008 % of Total	
	2002	2003	2004	2005	2006	2007	2008		2002	2003	2004	2005	2006	2007	2008		
Above State Standards	36	0	0	0	0	0	0	0	0.0%	0.0%	0.0%	0.0%	0.0%	0.0%	0.0%	0.0%	
	35	0	0	0	0	0	0	0	0.0%	0.0%	0.0%	0.0%	0.0%	0.0%	0.0%	0.0%	
	34	0	0	0	0	0	0	0	0.0%	0.0%	0.0%	0.0%	0.0%	0.0%	0.0%	0.0%	
	33	0	0	0	0	0	0	0	0.0%	0.0%	0.0%	0.0%	0.0%	0.0%	0.0%	0.0%	
	32	0	2	0	0	0	0	1	3	0.0%	5.4%	0.0%	0.0%	0.0%	0.0%	0.5%	0.7%
	31	0	0	0	0	0	0	1	1	0.0%	5.4%	0.0%	0.0%	0.0%	0.0%	1.1%	0.2%
	30	0	0	0	0	2	1	0	3	0.0%	5.4%	0.0%	0.0%	7.1%	3.0%	1.1%	0.7%
	29	0	0	0	1	1	2	1	5	0.0%	5.4%	0.0%	2.1%	10.7%	9.1%	1.6%	1.2%
	28	1	0	0	0	0	0	1	2	3.4%	5.4%	0.0%	2.1%	10.7%	9.1%	2.1%	0.5%
	27	1	3	0	1	0	1	3	9	6.9%	13.5%	0.0%	4.3%	10.7%	12.1%	3.7%	2.2%
	26	1	1	1	1	0	0	3	7	10.3%	16.2%	2.4%	6.4%	10.7%	12.1%	5.3%	1.7%
	25	3	1	3	3	1	2	7	20	20.7%	18.9%	9.8%	12.8%	14.3%	18.2%	9.0%	5.0%
	24	1	3	4	0	0	0	5	13	24.1%	27.0%	19.5%	12.8%	14.3%	18.2%	11.7%	3.2%
	23	1	1	5	2	0	5	2	16	27.6%	29.7%	31.7%	17.0%	14.3%	33.3%	12.8%	4.0%
22	3	3	4	2	2	1	4	19	37.9%	37.8%	41.5%	21.3%	21.4%	36.4%	14.9%	4.7%	
21	2	2	4	3	3	1	11	26	44.8%	43.2%	51.2%	27.7%	32.1%	39.4%	20.7%	6.5%	
20	2	1	2	4	5	3	17	34	51.7%	45.9%	56.1%	36.2%	50.0%	48.5%	29.8%	8.4%	
19	0	1	6	9	2	0	15	33	51.7%	48.6%	70.7%	55.3%	57.1%	48.5%	37.8%	8.2%	
Below State Standards	18	1	4	1	1	3	3	13	26	55.2%	59.5%	73.2%	57.4%	67.9%	57.6%	44.7%	6.5%
	17	1	2	2	5	2	2	14	28	58.6%	64.9%	78.0%	68.1%	75.0%	63.6%	52.1%	6.9%
	16	1	3	0	4	0	0	13	21	62.1%	73.0%	78.0%	76.6%	75.0%	63.6%	59.0%	5.2%
	15	1	1	1	1	1	2	13	20	65.5%	75.7%	80.5%	78.7%	78.6%	69.7%	66.0%	5.0%
	14	3	1	1	3	1	0	4	13	75.9%	78.4%	82.9%	85.1%	82.1%	69.7%	68.1%	3.2%
	13	0	3	1	0	1	1	5	11	75.9%	86.5%	85.4%	85.1%	85.7%	72.7%	70.7%	2.7%
	12	1	1	0	0	0	0	0	2	79.3%	89.2%	85.4%	85.1%	85.7%	72.7%	70.7%	0.5%
	11	0	0	0	0	0	0	1	1	79.3%	89.2%	85.4%	85.1%	85.7%	72.7%	71.3%	0.2%
	10	0	0	0	0	0	0	1	1	79.3%	89.2%	85.4%	85.1%	85.7%	72.7%	71.8%	0.2%
	9	0	0	0	0	0	0	1	1	79.3%	89.2%	85.4%	85.1%	85.7%	72.7%	71.8%	0.2%
<b>Total ACT Scores</b>	<b>23</b>	<b>33</b>	<b>35</b>	<b>40</b>	<b>24</b>	<b>24</b>	<b>135</b>	<b>314</b>	<b>79.3%</b>	<b>89.2%</b>	<b>85.4%</b>	<b>85.1%</b>	<b>85.7%</b>	<b>72.7%</b>	<b>71.8%</b>	<b>77.9%</b>	
ASSET/Compass/SAT <sup>+</sup>	6	4	6	7	4	9	53	89	20.7%	10.8%	14.6%	14.9%	14.3%	27.3%	28.2%	22.1%	
<b>Total First-Time Freshmen</b>	<b>29</b>	<b>37</b>	<b>41</b>	<b>47</b>	<b>28</b>	<b>33</b>	<b>188</b>	<b>403</b>	<b>Percentile Rank</b>								
<b>ASU ACT Composite Average</b>	<b>20.5</b>	<b>20.4</b>	<b>20.9</b>	<b>19.6</b>	<b>20.3</b>	<b>21.4</b>	<b>19.1</b>	<b>75th</b>	<b>26</b>	<b>25</b>	<b>24</b>	<b>23</b>	<b>22</b>	<b>23</b>	<b>21</b>		
								<b>50th</b>	<b>21</b>	<b>21</b>	<b>20</b>	<b>21</b>	<b>20</b>	<b>21</b>	<b>19</b>		
<b>Average High School GPA</b>	<b>3.03</b>	<b>2.92</b>	<b>3.03</b>	<b>2.91</b>	<b>3.06</b>	<b>2.99</b>	<b>2.73</b>	<b>25th</b>	<b>17</b>	<b>16</b>	<b>16</b>	<b>19</b>	<b>19</b>	<b>18</b>	<b>16</b>		

\*NOTE: Other Males represents all other races besides African Americans and White Americans.

<sup>+</sup>Includes students without test scores.

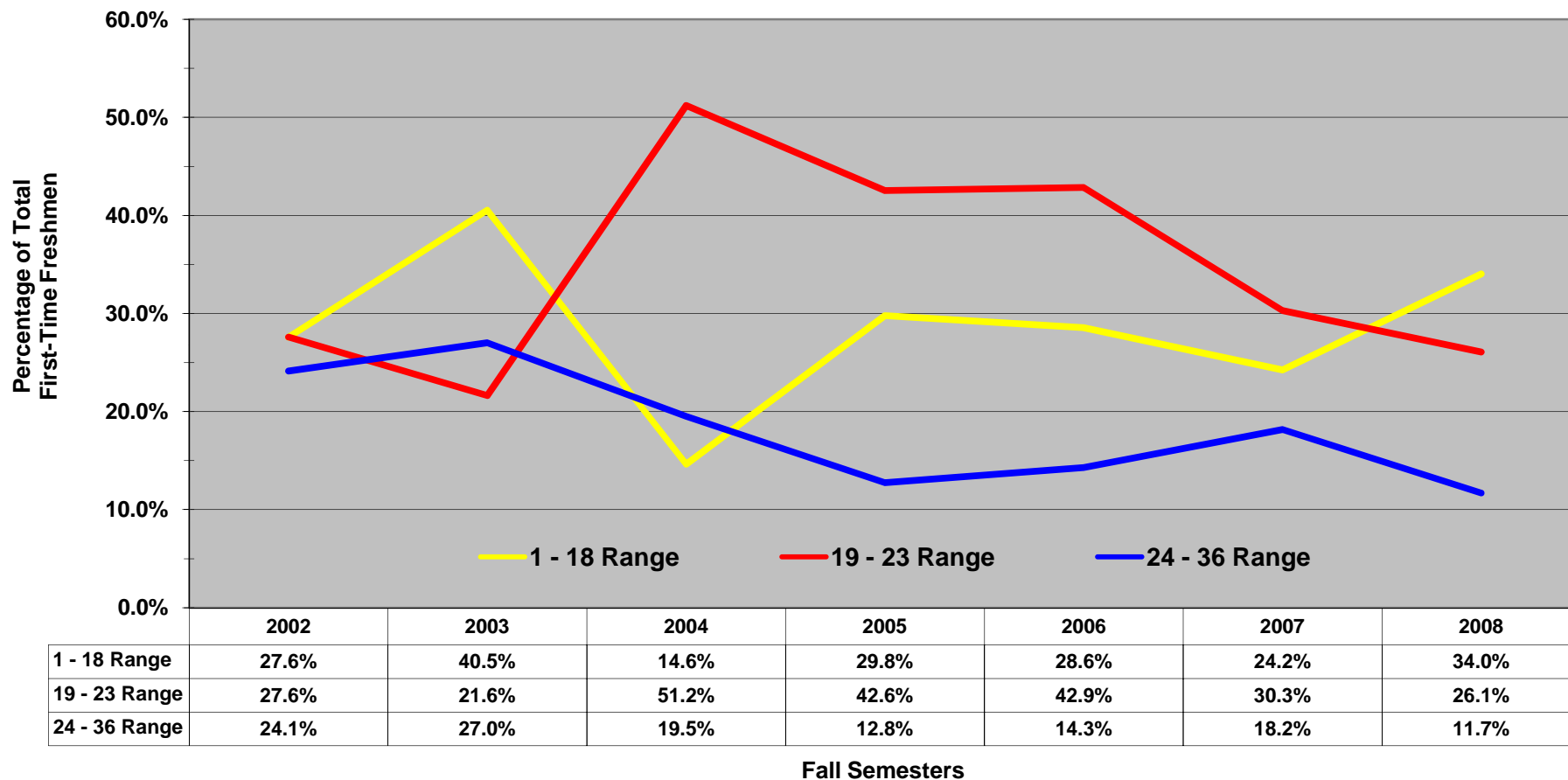
Disclaimer: It is important to note that the information in this profile may differ from data reported by the Office of Institutional Research, Planning, & Assessment to other federal, state, and regional agencies due to differences in reporting guidelines, reporting definitions, and the timing of when the information was prepared. Analysis prepared by the Office of Institutional Research, Planning, & Assessment

# Historical Fall ACT Composite Scores - Other Males\*

Arkansas State University

## Proportion of Fall First-Time Freshmen by ACT Composite Score Ranges

Jonesboro Campus



\*NOTE: Other Males represents all other races besides African Americans and White Americans.

Disclaimer: It is important to note that the information in this profile may differ from data reported by the Office of Institutional Research, Planning, & Assessment to other federal, state, and regional agencies due to differences in reporting guidelines, reporting definitions, and the timing of when the information was prepared. Analysis prepared by the Office of Institutional Research, Planning, & Assessment