



Arkansas State University

Enrollment Management Information: First-Time Freshmen ACT Scores Historical Profile Fall 1998 - Fall 2008

The Office of Institutional Research, Planning, & Assessment
email: asuirp@astate.edu
web: irp.astate.edu

Historical Fall ACT Composite Scores

Arkansas State University

Number of Fall First-Time Freshmen by ACT Composite Scores

Jonesboro Campus

ACT Test Scores	Fall Semesters											1998-2008 High	2008 # Change from High	% of Total					
	1998	1999	2000	2001	2002	2003	2004	2005	2006	2007	2008			1998	2003	2008			
Above State Standards	36	0	0	0	0	0	0	0	0	0	0	0	0	0	0	0	0.0%	0.0%	0.0%
	35	0	1	0	0	1	1	0	0	0	0	0	0	0	1	-1	0.0%	0.1%	0.0%
	34	0	1	0	0	0	0	0	0	1	0	0	0	1	-1	0.0%	0.0%	0.0%	
	33	1	2	6	3	3	1	1	3	4	3	3	3	6	-3	0.1%	0.1%	0.2%	
	32	3	1	7	5	4	4	2	5	6	5	4	4	7	-3	0.2%	0.3%	0.2%	
	31	15	12	14	14	18	12	5	7	12	8	9	18	18	-9	0.8%	0.8%	0.5%	
	30	26	23	32	23	41	30	12	16	32	30	21	41	41	-20	1.5%	2.0%	1.1%	
	29	25	27	17	34	23	23	21	27	36	34	33	36	36	-3	1.4%	1.5%	1.7%	
	28	49	46	58	47	48	39	35	62	63	49	67	67	67	0	2.7%	2.6%	3.5%	
	27	98	91	102	77	80	61	49	64	71	82	77	102	102	-25	5.5%	4.0%	4.0%	
	26	136	160	121	123	127	79	51	72	58	72	75	160	160	-85	7.6%	5.2%	3.9%	
	25	143	139	144	119	140	101	69	89	114	111	103	144	144	-41	8.0%	6.6%	5.4%	
	24	193	159	166	154	166	136	95	115	152	131	141	193	193	-52	10.8%	8.9%	7.4%	
	23	111	101	86	105	97	90	68	99	107	103	102	111	111	-9	6.2%	5.9%	5.4%	
	22	108	119	120	114	89	108	87	112	120	128	119	128	128	-9	6.1%	7.1%	6.3%	
21	119	127	121	141	107	104	106	147	114	129	157	157	157	0	6.7%	6.8%	8.3%		
20	139	123	128	153	107	123	117	128	157	137	164	164	164	0	7.8%	8.1%	8.6%		
19	146	113	132	122	112	105	109	130	118	136	154	154	154	0	8.2%	6.9%	8.1%		
Below State Standards	18	119	108	113	93	93	93	94	75	95	113	113	119	-6	6.7%	6.1%	5.9%		
	17	94	93	77	113	87	75	91	83	103	97	125	125	0	5.3%	4.9%	6.6%		
	16	64	69	67	84	59	69	98	72	86	97	98	98	0	3.6%	4.5%	5.2%		
	15	53	58	54	47	48	49	49	63	65	68	90	90	0	3.0%	3.2%	4.7%		
	14	36	43	29	30	43	38	43	43	43	42	36	43	-7	2.0%	2.5%	1.9%		
	13	14	26	14	17	21	33	20	27	22	15	16	33	-17	0.8%	2.2%	0.8%		
	12	9	9	7	5	10	8	11	10	7	6	5	11	11	-6	0.5%	0.5%	0.3%	
	11	1	4	3	3	3	3	2	1	2	2	3	4	4	-1	0.1%	0.2%	0.2%	
1-10	2	1	0	1	2	7	4	2	0	0	1	7	7	-6	0.1%	0.5%	0.1%		
Total ACT Scores	1,704	1,656	1,618	1,627	1,529	1,392	1,239	1,452	1,588	1,598	1,716	1,716	1,716	0	95.6%	91.3%	90.2%		
Other	79	58	45	77	103	133	139	132	139	135	186	186	186	0	4.4%	8.7%	9.8%		
Total First-Time Freshmen	1,783	1,714	1,663	1,704	1,632	1,525	1,378	1,584	1,727	1,733	1,902	1,902	1,902	0					
ASU ACT Averages	21.8	21.8	22.0	21.7	22.0	21.4	20.6	21.3	21.5	21.4	21.2	22.0	22.0	-0.8					
National ACT Averages	21.0	21.0	21.0	21.0	20.8	20.8	20.9	20.9	21.1	21.2	21.1	21.2	21.2	-0.1					
State ACT Averages	20.4	20.3	20.3	20.1	20.2	20.3	20.4	20.3	20.6	20.5	20.6	20.6	20.6	0.0					

NOTE: "Other" represents those first-time freshmen who did not submit ACT scores.

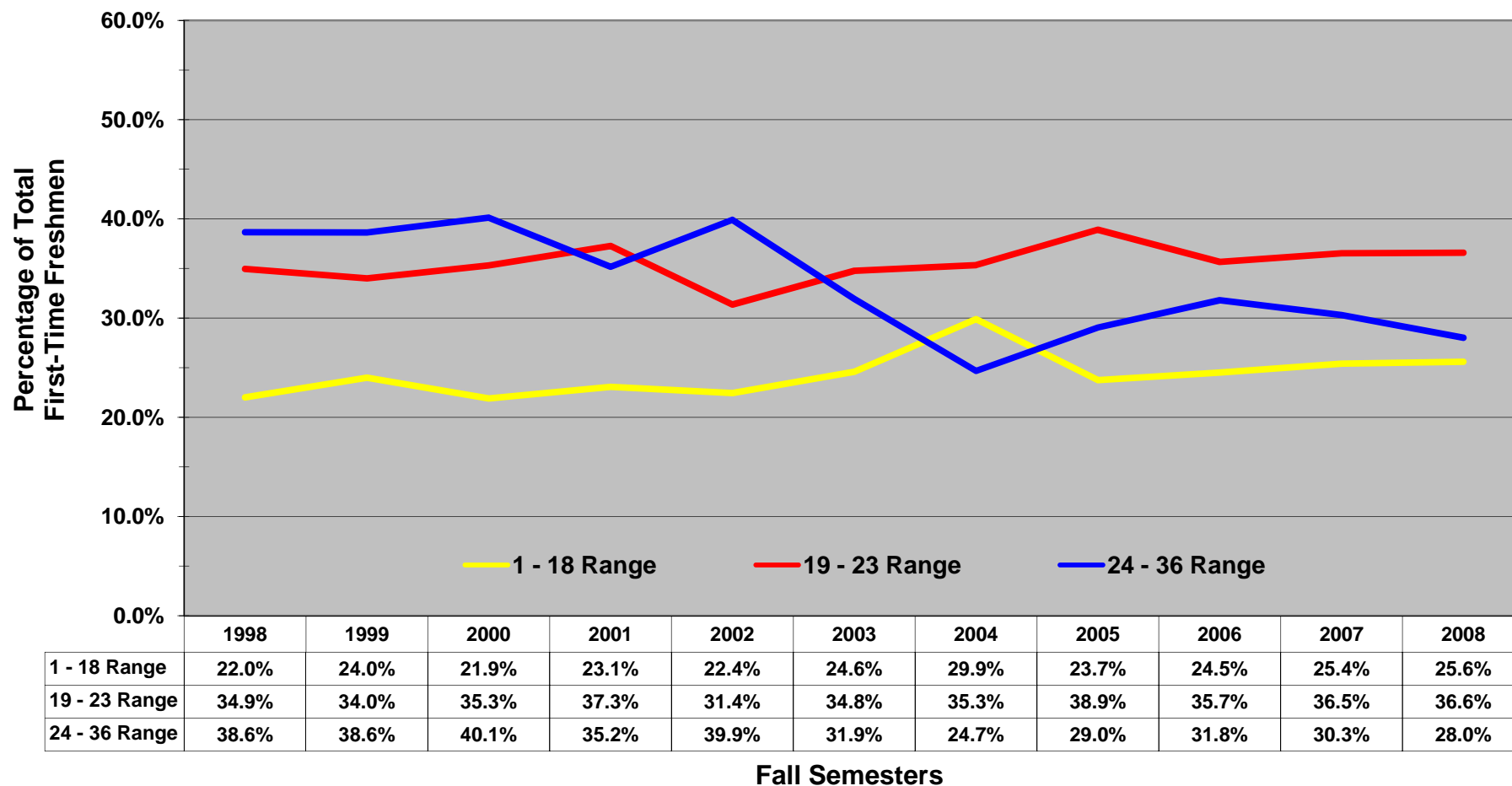
Analysis Prepared by The Office of Institutional Research, Planning, & Assessment; email address: asuip@astate.edu; web address: irp.astate.edu

Historical Fall ACT Composite Scores

Arkansas State University

Proportion of Fall First-Time Freshmen by ACT Composite Score Ranges

Jonesboro Campus



NOTE: Students who did not submit ACT scores are not represented.

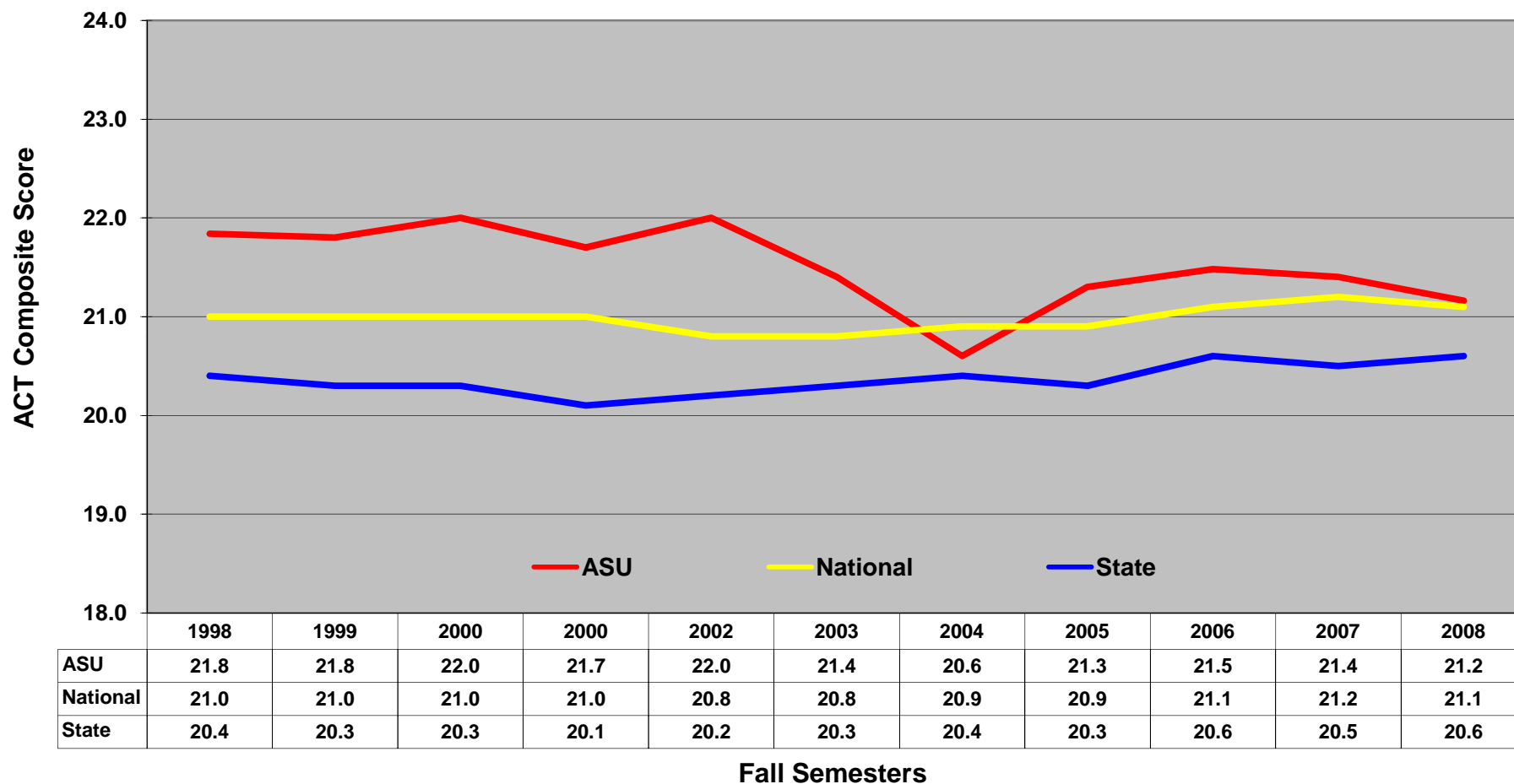
Analysis Prepared by The Office of Institutional Research, Planning, & Assessment; email address: asuip@astate.edu; web address: irp.astate.edu

Historical Fall ACT Composite Averages

Arkansas State University

Fall First-Time Freshmen by ACT Composite Averages

Jonesboro Campus



NOTE: Students who did not submit ACT scores are not represented.

Analysis Prepared by The Office of Institutional Research, Planning, & Assessment; email address: asuip@astate.edu; web address: irp.astate.edu

Historical Fall ACT English Scores

Arkansas State University

Number of Fall First-Time Freshmen by ACT English Scores

Jonesboro Campus

ACT Test Scores	Fall Semesters											1998-2008 High	2007 # Change from High	% of Total			
	1998	1999	2000	2001	2002	2003	2004	2005	2006	2007	2008			1998	2003	2008	
Above State Standards	36	1	0	3	0	1	2	0	1	2	2	1	3	-2	0.1%	0.1%	0.1%
	35	3	8	8	5	5	7	10	4	8	5	11	11	0	0.2%	0.5%	0.6%
	34	5	11	14	18	16	13	5	14	34	19	9	34	-25	0.3%	0.9%	0.5%
	33	17	15	9	11	16	18	9	19	23	22	15	23	-8	1.0%	1.2%	0.8%
	32	14	22	19	18	22	23	18	26	30	22	18	30	-12	0.8%	1.5%	0.9%
	31	16	27	39	22	43	20	13	34	27	26	38	43	-5	0.9%	1.3%	2.0%
	30	68	68	65	58	34	61	30	40	59	47	52	68	-16	3.8%	4.0%	2.7%
	29	74	65	66	73	93	58	57	70	61	49	58	93	-35	4.2%	3.8%	3.0%
	28	87	104	98	97	84	61	43	68	63	71	69	104	-35	4.9%	4.0%	3.6%
	27	130	122	111	97	109	80	44	42	66	65	65	130	-65	7.3%	5.2%	3.4%
	26	128	105	82	96	84	88	69	68	93	74	83	128	-45	7.2%	5.8%	4.4%
	25	123	109	101	114	105	94	65	91	100	108	99	123	-24	6.9%	6.2%	5.2%
	24	134	132	127	123	114	75	69	88	93	93	104	134	-30	7.5%	4.9%	5.5%
	23	95	87	107	106	85	81	61	75	72	92	97	107	-10	5.3%	5.3%	5.1%
22	80	100	104	118	102	89	75	120	114	125	127	127	0	4.5%	5.8%	6.7%	
21	129	97	122	114	96	99	89	119	106	140	142	142	0	7.2%	6.5%	7.5%	
20	113	96	105	98	96	111	110	95	128	114	126	128	-2	6.3%	7.3%	6.6%	
19	104	122	113	107	91	78	93	102	102	116	110	122	-12	5.8%	5.1%	5.8%	
Below State Standards	18	99	76	57	69	61	59	70	73	78	58	84	99	-15	5.6%	3.9%	4.4%
	17	82	66	73	72	64	54	48	65	65	59	84	84	0	4.6%	3.5%	4.4%
	16	61	55	52	64	43	50	62	59	59	59	90	90	0	3.4%	3.3%	4.7%
	15	42	45	48	50	45	58	58	53	67	74	71	74	-3	2.4%	3.8%	3.7%
	14	32	32	28	32	43	35	56	40	47	62	55	62	-7	1.8%	2.3%	2.9%
	13	31	26	23	22	18	16	29	20	35	28	43	43	0	1.7%	1.0%	2.3%
	12	15	26	15	16	21	19	16	17	17	25	26	26	0	0.8%	1.2%	1.4%
	11	13	23	10	15	19	13	12	16	17	21	16	23	-7	0.7%	0.9%	0.8%
1-10	8	17	19	12	19	30	28	33	22	22	23	33	-10	0.4%	2.0%	1.2%	
Total ACT Scores	1,704	1,656	1,618	1,627	1,529	1,392	1,239	1,452	1,588	1,598	1,716	1,716	0	95.6%	91.3%	90.2%	
Other	79	58	45	77	103	133	139	132	139	135	186	186	0	4.4%	8.7%	9.8%	
Total First-Time Freshmen	1,783	1,714	1,663	1,704	1,632	1,525	1,378	1,584	1,727	1,733	1,902	1,902	0				
ASU ACT Averages	22.6	22.6	22.8	22.6	22.7	22.4	21.3	22.0	22.3	21.9	21.6	22.8	-1.2				
National ACT Averages	20.4	20.5	20.5	20.5	20.2	20.3	20.4	20.4	20.6	20.7	20.6	20.7	-0.1				
State ACT Averages	20.6	20.6	20.7	20.4	20.5	20.7	20.6	20.5	20.7	20.5	20.7	20.7	0.0				

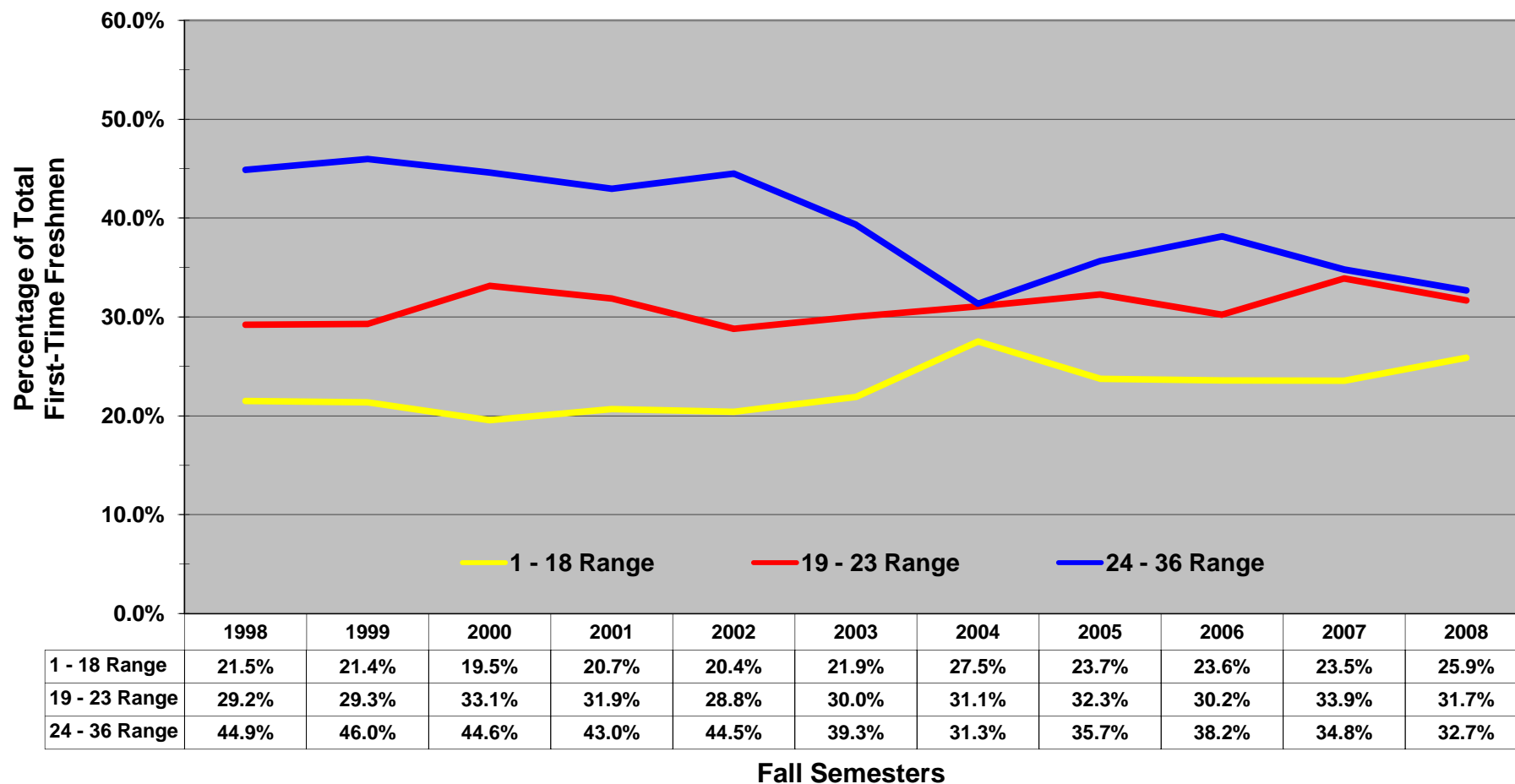
NOTE: "Other" represents those first-time freshmen who did not submit ACT scores.
 Analysis Prepared by The Office of Institutional Research, Planning, & Assessment; email address: asuirp@astate.edu; web address: irp.astate.edu

Historical Fall ACT English Scores

Arkansas State University

Proportion of Fall First-Time Freshmen by ACT English Score Ranges

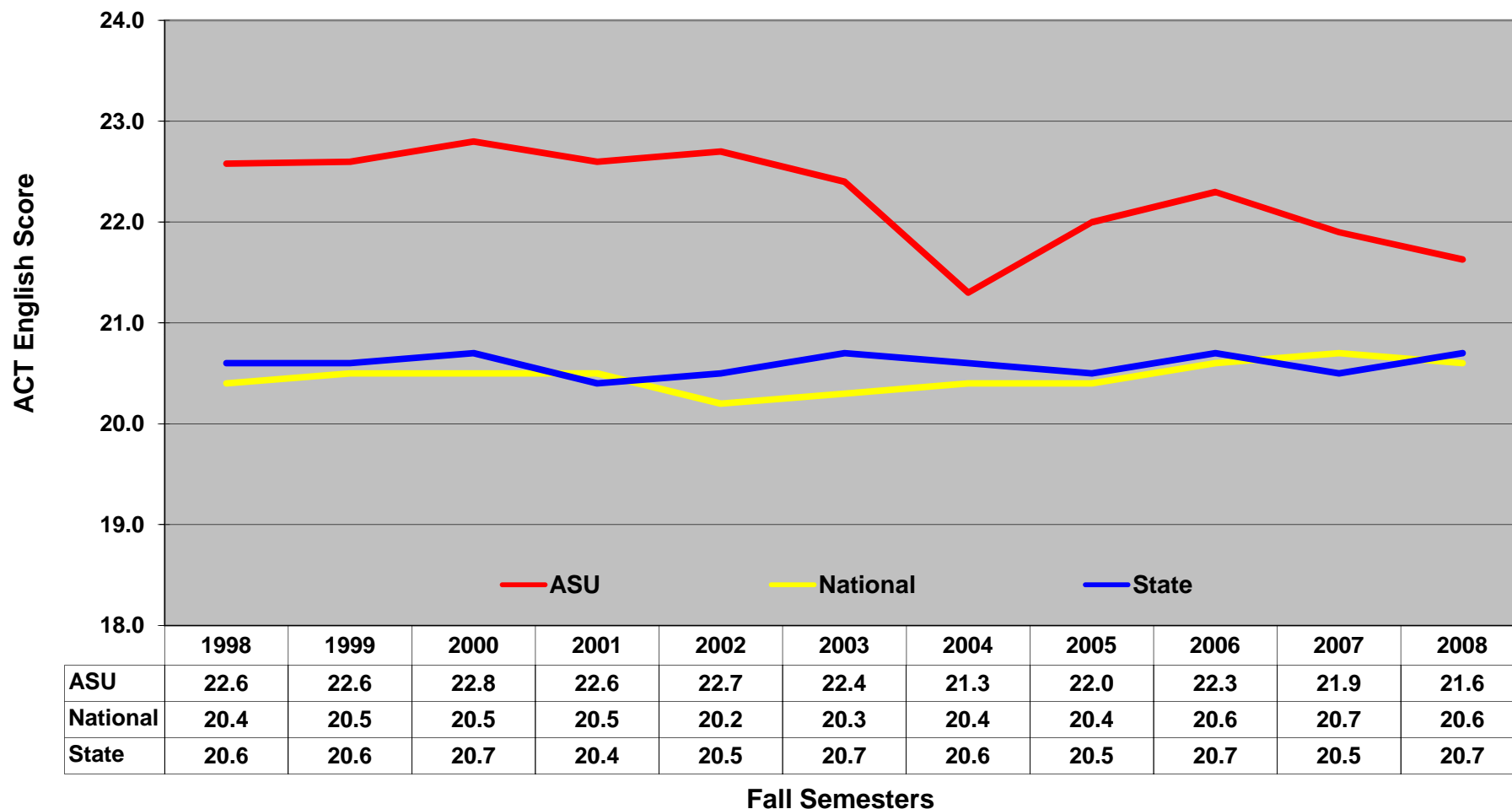
Jonesboro Campus



NOTE: Students who did not submit ACT scores are not represented.
 Analysis Prepared by The Office of Institutional Research, Planning, & Assessment; email address: asuirp@astate.edu; web address: irp.astate.edu

Historical Fall ACT English Averages

Fall First-Time Freshmen by ACT English Averages



NOTE: Students who did not submit ACT scores are not represented.
 Analysis Prepared by The Office of Institutional Research, Planning, & Assessment; email address: asuip@astate.edu; web address: irp.astate.edu

Historical Fall ACT Math Scores

Arkansas State University

Number of Fall First-Time Freshmen by ACT Math Scores

Jonesboro Campus

ACT Test Scores	Fall Semesters											1998-2008 High	2008 # Change from High	% of Total			
	1998	1999	2000	2001	2002	2003	2004	2005	2006	2007	2008			1998	2003	2008	
Above State Standards	36	1	2	0	0	0	1	0	0	1	0	0	2	-2	0.1%	0.1%	0.0%
	35	1	0	0	1	1	1	0	1	1	2	2	2	0	0.1%	0.1%	0.1%
	34	0	1	0	3	0	0	2	1	6	3	3	6	-3	0.0%	0.0%	0.2%
	33	0	2	2	0	2	2	3	2	2	3	4	4	0	0.0%	0.1%	0.2%
	32	6	5	4	6	11	8	3	8	5	7	11	11	0	0.3%	0.5%	0.6%
	31	10	6	11	12	7	8	5	11	7	14	12	14	-2	0.6%	0.5%	0.6%
	30	21	13	17	13	21	7	7	9	13	9	18	21	-3	1.2%	0.5%	0.9%
	29	29	12	39	15	40	21	17	34	29	24	27	40	-13	1.6%	1.4%	1.4%
	28	36	35	38	46	44	35	26	34	32	36	54	54	0	2.0%	2.3%	2.8%
	27	64	59	55	60	72	47	42	56	70	87	53	87	-34	3.6%	3.1%	2.8%
	26	98	77	80	84	60	80	50	71	93	63	87	98	-11	5.5%	5.2%	4.6%
	25	96	106	110	92	110	85	53	80	101	101	113	113	0	5.4%	5.6%	5.9%
	24	102	101	114	85	76	83	85	103	119	116	127	127	0	5.7%	5.4%	6.7%
	23	101	106	93	94	107	89	75	101	104	106	102	107	-5	5.7%	5.8%	5.4%
	22	103	152	105	107	108	85	66	78	98	116	93	152	-59	5.8%	5.6%	4.9%
	21	117	106	105	111	79	87	70	96	95	96	109	117	-8	6.6%	5.7%	5.7%
20	145	142	105	156	110	91	70	123	117	92	110	156	-46	8.1%	6.0%	5.8%	
19	168	150	168	134	138	120	108	97	112	128	135	168	-33	9.4%	7.9%	7.1%	
Below State Standards	18	165	146	136	150	120	126	98	113	143	126	144	165	-21	9.3%	8.3%	7.6%
	17	150	136	148	164	125	104	126	121	141	136	144	164	-20	8.4%	6.8%	7.6%
	16	121	105	127	130	115	134	140	135	141	164	201	201	0	6.8%	8.8%	10.6%
	15	84	104	82	89	89	82	110	86	90	115	108	115	-7	4.7%	5.4%	5.7%
	14	54	50	46	43	64	58	50	53	55	37	44	64	-20	3.0%	3.8%	2.3%
	13	15	24	16	17	18	27	19	25	10	12	6	27	-21	0.8%	1.8%	0.3%
	12	14	14	14	8	8	3	10	7	2	4	5	14	-9	0.8%	0.2%	0.3%
	11	1	1	1	1	3	3	0	4	1	0	3	4	-1	0.1%	0.2%	0.2%
	1-10	2	1	2	6	1	5	4	3	0	1	1	6	-5	0.1%	0.3%	0.1%
Total ACT Scores	1,704	1,656	1,618	1,627	1,529	1,392	1,239	1,452	1,588	1,598	1,716	1,716	0	95.6%	91.3%	90.2%	
Other	79	58	45	77	103	133	139	132	139	135	186	186	0	4.4%	8.7%	9.8%	
Total First-Time Freshmen	1,783	1,714	1,663	1,704	1,632	1,525	1,378	1,584	1,727	1,733	1,902	1,902	0				
ASU ACT Averages	20.6	20.5	20.7	20.5	20.8	20.4	19.9	20.6	20.8	20.7	20.7	20.8	-0.1				
National ACT Averages	20.8	20.7	20.7	20.7	20.6	20.6	20.7	20.7	20.8	21.0	21.0	21.0	0.0				
State ACT Averages	19.3	19.2	19.2	19.0	19.2	19.3	19.5	19.6	19.9	19.9	20.1	20.1	0.0				

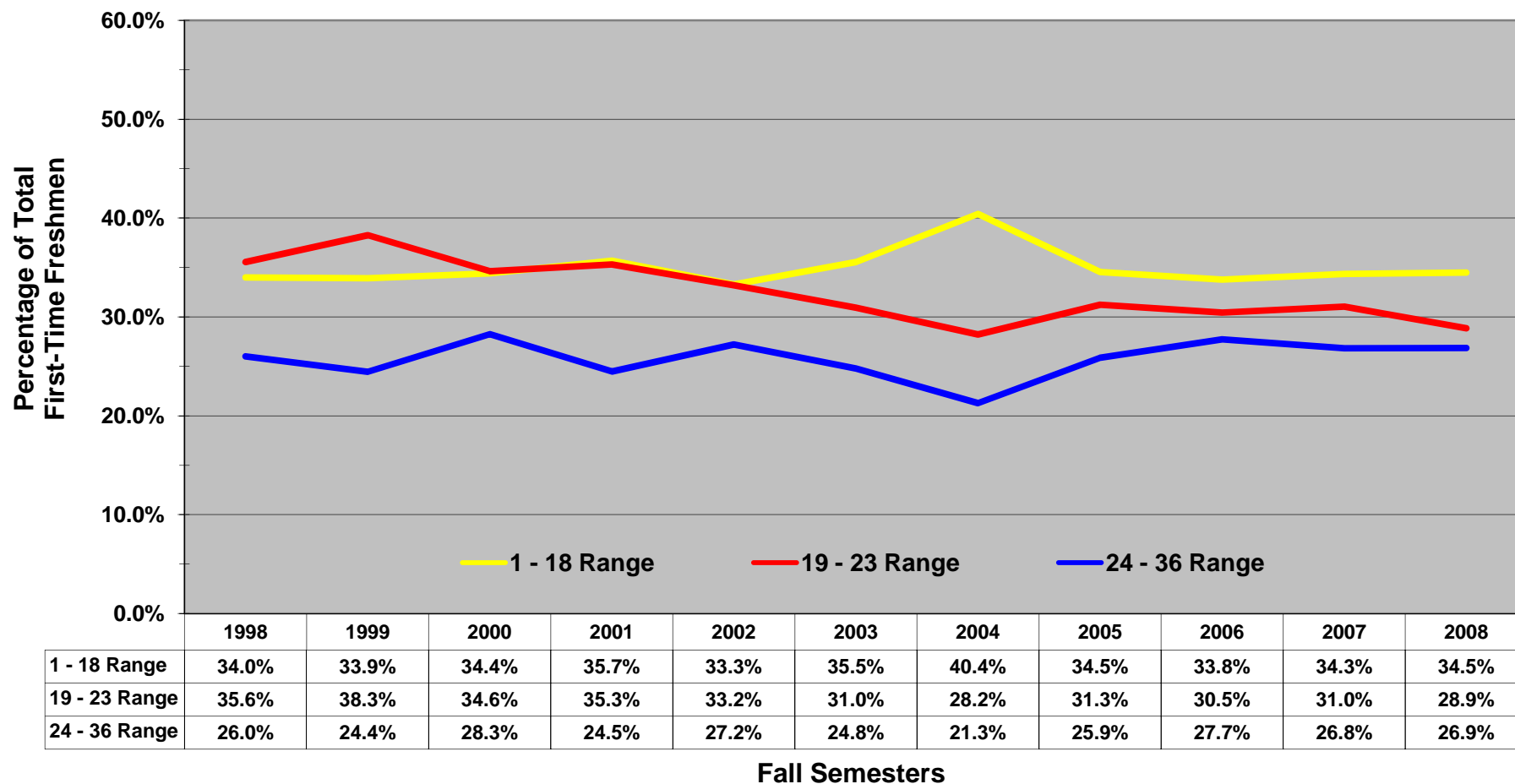
NOTE: "Other" represents those first-time freshmen who did not submit ACT scores.
 Analysis Prepared by The Office of Institutional Research, Planning, & Assessment; email address: asuirp@astate.edu; web address: irp.astate.edu

Historical Fall ACT Math Scores

Arkansas State University

Proportion of Fall First-Time Freshmen by ACT Math Score Ranges

Jonesboro Campus



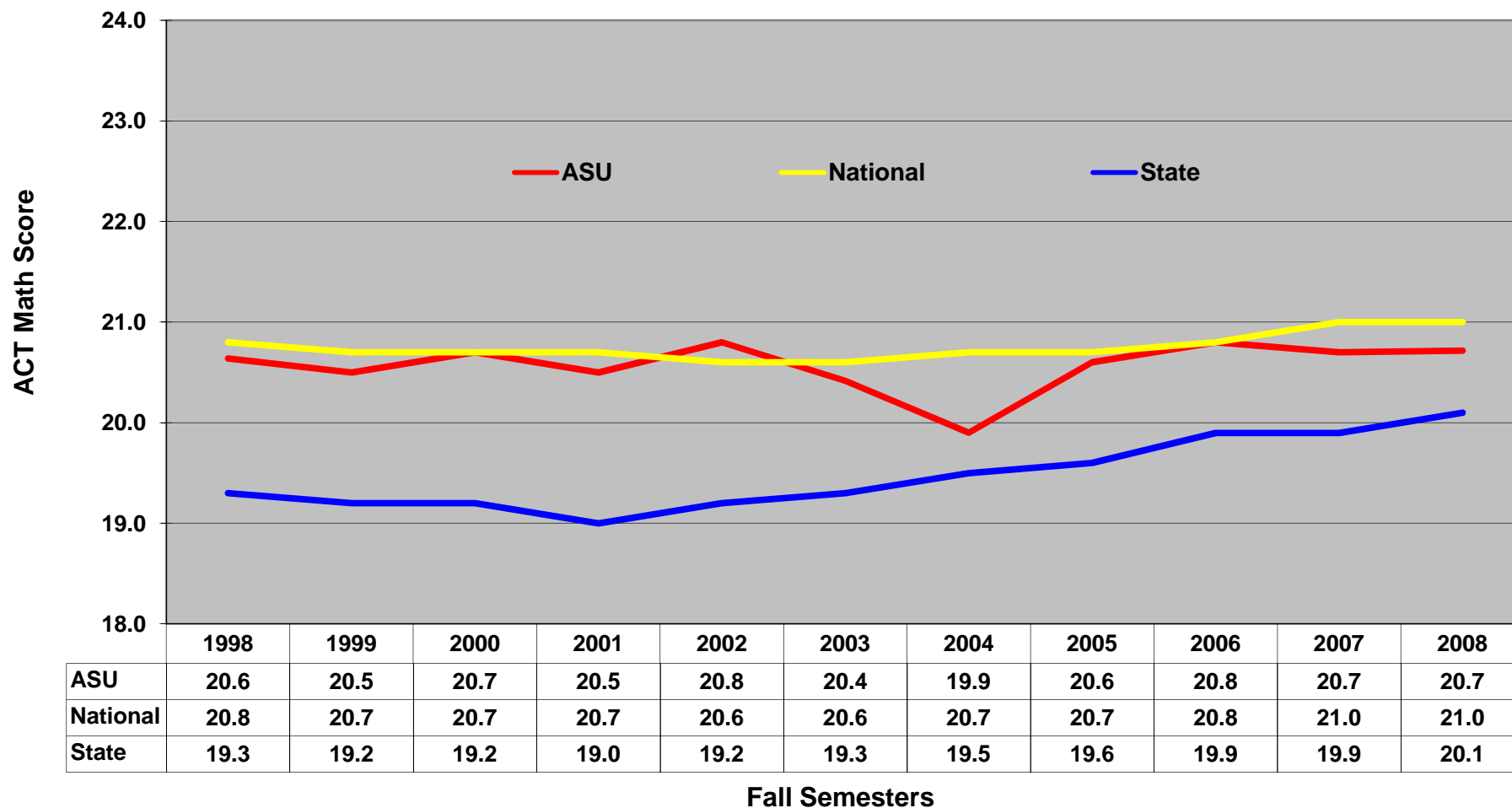
NOTE: Students who did not submit ACT scores are not represented.
 Analysis Prepared by The Office of Institutional Research, Planning, & Assessment; email address: asuip@astate.edu; web address: irp.astate.edu

Historical Fall ACT Math Averages

Fall First-Time Freshmen by ACT Math Averages

Arkansas State University

Jonesboro Campus



NOTE: Students who did not submit ACT scores are not represented.
 Analysis Prepared by The Office of Institutional Research, Planning, & Assessment; email address: asuip@astate.edu; web address: irp.astate.edu